

QUALITY ENGINEERING WITHOUT THE WAIT

2019
2020

Introducing the SSI SCHAEFER Quick Ship Program.
Fast availability on storage items you need every day.

Z - STOCK

L

SSI SCHAEFER

DELIVERING QUALITY & INNOVATION SINCE 1937

From the very first product, the Lager-Fix, the Schäfer family has been known for creating products that are both innovative and deliver performance. With over 10,000 employees worldwide, SSI SCHAEFER is working hard to deliver the items you need fast.



BECAUSE YOUR BUSINESS NEVER STOPS

This is why our material handling experts have picked a selection of our best selling products to help you with your day-to-day storage needs.

WELCOME

QUICK SHIP PROGRAM

SHELVING & CABINETS

CONTAINERS & BINS

WAREHOUSE SOLUTIONS



YOU NEED IT NOW AND SSI SCHAEFER DELIVERS

As customer demands increase, it's even more important for your business to run smoothly. That's why SSI SCHAEFER designed the Quick Ship Program. With quick shipping of products that are readily available and in stock, you'll know that your storage and material handling needs are out for delivery.

Our team of warehouse experts designed the Quick Ship Program with the most commonly used SSI SCHAEFER products in mind. Plus, with SSI SCHAEFER, fast delivery doesn't mean you have to sacrifice quality. The Quick Ship Program offers the same great warranty and quality that you know and trust from SSI SCHAEFER. Everything you need for warehouse storage is a quick phone call or email away, and now comes standard with fast shipping.

Ordering is simple too. Just contact your local distributor or representative, and your items will ship directly to you. All products are shipped within the U.S. F.O.B. Charlotte, N.C. with standard shipping of five to seven business days.

ORGANIZE YOUR IN-STOCK INVENTORY WITH COMPLETE SHELVING AND STORAGE SYSTEMS FROM SSI SCHAEFER

SSI SCHAEFER shelving and bin storage units are constructed using heavy-duty materials. Each unit is engineered to store virtually every part within your warehouse, workshop, or maintenance facility and works in a variety of environments. Plus, the SSI SCHAEFER system offers a collection of custom accessories to keep you organized.



WELCOME

QUICK SHIP PROGRAM

SHELVING & CABINETS

CONTAINERS & BINS

WAREHOUSE SOLUTIONS

147

146

145

144

SHELVING UNITS BUILT TO WITHSTAND ANY APPLICATION

R3000, the most customizable shelving unit available

The R3000 Schaefer Shelving units were developed to cover all your warehouse needs, including high bay load capacities and multi-tier mezzanine applications.

This modular shelving system is expandable to four levels using basically the same components as in a single-level installation. Thanks to a vast range of accessories, it is also the most customizable shelving unit available. The R3000 is the only shelving system that grows with your business.

The R3000 Shelving removes the classic distinction between modular shelving, longspan shelving and cantilever racking; one system to store everything. Furthermore, the boltless installation makes set up a fast and hassle-free process.

For assistance, call you local SSI SCHAEFER distributor today.

R3000 FEATURES

- Double box post configuration for maximum loading capacity, up to 10,000 lbs, regardless of height. 20 gauge steel parts
- Pre-punched lugs on posts allow for quick installation and shelf adjustment. No clips are needed
- Shelves can load up to 1,000 lbs U.D.L. thanks to the special box reinforced design and can be adjusted to tilt up to 12 degrees
- Starter units include 2 side frames with top caps, 1 cross bracing set and shelves
- Easy boltless-free installation. Frames shipped pre-assembled. No nuts, bolts or tools required
- All units come with standard galvanized finish



Starter + Add-on Principle

Open Units

W x D (inches)	85"H (inches) Starter	85"H (inches) Add-on	Levels	98"H (inches) Starter	98"H (inches) Add-on	Levels	118"H (inches) Starter	118"H (inches) Add-on	Levels	Cpty per shelf (lbs)
36 X 18	R3SG.183608505HO	R3AG.183608505HO	5	R3SG.183608506HO	R3AG.183608506HO	6	R3SG.183608507HO	R3AG.183608507HO	7	600
36 X 24	R3SG.243608505HO	R3AG.243608505HO	5	R3SG.243608506HO	R3AG.243608506HO	6	R3SG.243608507HO	R3AG.243608507HO	7	600
39 x 12	R3SG.123908505HO	R3AG.123908505HO	5	R3SG.123909806HO	R3AG.123909806HO	6	R3SG.123911807HO	R3AG.123911807HO	7	600
39 x 16	R3SG.163908505HO	R3AG.163908505HO	5	R3SG.163909806HO	R3AG.163909806HO	6	R3SG.163911807HO	R3AG.163911807HO	7	600
39 x 20	R3SG.203908505HO	R3AG.203908505HO	5	R3SG.203909806HO	R3AG.203909806HO	6	R3SG.203911807HO	R3AG.203911807HO	7	600
39 x 24	R3SG.243908505HO	R3AG.243908505HO	5	R3SG.243909806HO	R3AG.243909806HO	6	R3SG.243911807HO	R3AG.243911807HO	7	600
39 x 32	R3SG.323908505XO	R3AG.323908505XO	5	R3SG.323909806XO	R3AG.323909806XO	6	R3SG.323911807XO	R3AG.323911807XO	7	1,000
48 x 18	R3SG.184808505XO	R3AG.184808505XO	5	R3SG.184809806XO	R3AG.184809806XO	6	R3SG.184811807XO	R3AG.184811807XO	7	1,000
48 x 24	R3SG.244808505XO	R3AG.244808505XO	5	R3SG.244809806XO	R3AG.244809806XO	6	R3SG.244811807XO	R3AG.244811807XO	7	1,000
51 x 16	R3SG.165008505HO	R3AG.165008505HO	5	R3SG.165009806HO	R3AG.165009806HO	6	R3SG.165011807HO	R3AG.165011807HO	7	600
51 x 20	R3SG.205008505XO	R3AG.205008505XO	5	R3SG.205009806XO	R3AG.205009806XO	6	R3SG.205011807XO	R3AG.205011807XO	7	1,000
51 x 24	R3SG.245008505XO	R3AG.245008505XO	5	R3SG.245009806XO	R3AG.245009806XO	6	R3SG.245011807XO	R3AG.245011807XO	7	1,000
51 x 32	R3SG.325008505XO	R3AG.325008505XO	5	R3SG.325009806XO	R3AG.325009806XO	6	R3SG.325011807XO	R3AG.325011807XO	7	1,000



R3000 SHELVING SYSTEM

WELCOME

QUICK SHIP PROGRAM

SHELVING & CABINETS

CONTAINERS & BINS

WAREHOUSE SOLUTIONS

Closed Units Solid Panels

W x D (inches)	85"H (inches) Starter	85"H (inches) Add-on	Levels	98"H (inches) Starter	98"H (inches) Add-on	Levels	118"H (inches) Starter	118"H (inches) Add-on	Levels	Cpty per shelf (lbs)
36 X 18	R3SG.183608505HC	R3AG.183608505HC	5	R3SG.183608506HC	R3AG.183608506HC	6	R3SG.183608507HC	R3AG.183608507HC	7	600
36 X 24	R3SG.243608505HC	R3AG.243608505HC	5	R3SG.243608506HC	R3AG.243608506HC	6	R3SG.243608507HC	R3AG.243608507HC	7	600
39 x 12	R3SG.123908505HC	R3AG.123908505HC	5	R3SG.123909806HC	R3AG.123909806HC	6	R3SG.123911807HC	R3AG.123911807HC	7	600
39 x 16	R3SG.163908505HC	R3AG.163908505HC	5	R3SG.163909806HC	R3AG.163909806HC	6	R3SG.163911807HC	R3AG.163911807HC	7	600
39 x 20	R3SG.203908505HC	R3AG.203908505HC	5	R3SG.203909806HC	R3AG.203909806HC	6	R3SG.203911807HC	R3AG.203911807HC	7	600
39 x 24	R3SG.243908505HC	R3AG.243908505HC	5	R3SG.243909806HC	R3AG.243909806HC	6	R3SG.243911807HC	R3AG.243911807HC	7	600
39 x 32	R3SG.323908505XC	R3AG.323908505XC	5	R3SG.323909806XC	R3AG.323909806XC	6	R3SG.323911807XC	R3AG.323911807XC	7	1,000
48 x 18	R3SG.184808505XC	R3AG.184808505XC	5	R3SG.184809806XC	R3AG.184809806XC	6	R3SG.184811807XC	R3AG.184811807XC	7	1,000
48 x 24	R3SG.244808505XC	R3AG.244808505XC	5	R3SG.244809806XC	R3AG.244809806XC	6	R3SG.244811807XC	R3AG.244811807XC	7	1,000
51 x 16	R3SG.165008505HC	R3AG.165008505HC	5	R3SG.165009806HC	R3AG.165009806HC	6	R3SG.165011807HC	R3AG.165011807HC	7	600
51 x 20	R3SG.205008505XC	R3AG.205008505XC	5	R3SG.205009806XC	R3AG.205009806XC	6	R3SG.205011807XC	R3AG.205011807XC	7	1,000
51 x 24	R3SG.245008505XC	R3AG.245008505XC	5	R3SG.245009806XC	R3AG.245009806XC	6	R3SG.245011807XC	R3AG.245011807XC	7	1,000
51 x 32	R3SG.325008505XC	R3AG.325008505XC	5	R3SG.325009806XC	R3AG.325009806XC	6	R3SG.325011807XC	R3AG.325011807XC	7	1,000

Closed Units Wire Panels


W x D (inches)	85"H (inches) Starter	85"H (inches) Add-on	Levels	98"H (inches) Starter	98"H (inches) Add-on	Levels	118"H (inches) Starter	118"H (inches) Add-on	Levels	Cpty per shelf (lbs)
36 x 18	R3SG.183608505HW	R3AG.183608505HW	5	R3SG.183608506HW	R3AG.183608506HW	6	R3SG.183608507HW	R3AG.183608507HW	7	600
36 X 24	R3SG.243608505HW	R3AG.243608505HW	5	R3SG.243608506HW	R3AG.243608506HW	6	R3SG.243608507HW	R3AG.243608507HW	7	600
39 x 12	R3SG.123908505HW	R3AG.123908505HW	5	R3SG.123909806HW	R3AG.123909806HW	6	R3SG.123911807HW	R3AG.123911807HW	7	600
39 x 16	R3SG.163908505HW	R3AG.163908505HW	5	R3SG.163909806HW	R3AG.163909806HW	6	R3SG.163911807HW	R3AG.163911807HW	7	600
39 x 20	R3SG.203908505HW	R3AG.203908505HW	5	R3SG.203909806HW	R3AG.203909806HW	6	R3SG.203911807HW	R3AG.203911807HW	7	600
39 x 24	R3SG.243908505HW	R3AG.243908505HW	5	R3SG.243909806HW	R3AG.243909806HW	6	R3SG.243911807HW	R3AG.243911807HW	7	600
39 x 32	R3SG.323908505XW	R3AG.323908505XW	5	R3SG.323909806XW	R3AG.323909806XW	6	R3SG.323911807XW	R3AG.323911807XW	7	1,000
48 x 18	R3SG.184808505XW	R3AG.184808505XW	5	R3SG.184809806XW	R3AG.184809806XW	6	R3SG.184811807XW	R3AG.184811807XW	7	1,000
48 x 24	R3SG.244808505XW	R3AG.244808505XW	5	R3SG.244809806XW	R3AG.244809806XW	6	R3SG.244811807XW	R3AG.244811807XW	7	1,000
51 x 16	R3SG.165008505HW	R3AG.165008505HW	5	R3SG.165009806HW	R3AG.165009806HW	6	R3SG.165011807HW	R3AG.165011807HW	7	600
51 x 20	R3SG.205008505XW	R3AG.205008505XW	5	R3SG.205009806XW	R3AG.205009806XW	6	R3SG.205011807XW	R3AG.205011807XW	7	1,000
51 x 24	R3SG.245008505XW	R3AG.245008505XW	5	R3SG.245009806XW	R3AG.245009806XW	6	R3SG.245011807XW	R3AG.245011807XW	7	1,000
51 x 32	R3SG.325008505XW	R3AG.325008505XW	5	R3SG.325009806XW	R3AG.325009806XW	6	R3SG.325011807XW	R3AG.325011807XW	7	1,000





R3000 SHELVING SYSTEM


R3000 ACCESSORIES


Aisle markers, leveling shims, floor anchors, back to back spacers, top caps, label holders and infill shelf pieces available in stock, ready to ship for fast and quality service. Multiple accessories for the little details, labels, aisle markers, etc.


Aisle Markers	Item	Units per pack	Description
	R3AM.GV2	10	Cross Aisle Marking Plate
	R3AM90.GV2	10	In-Aisle Marking Plate


Cross Bracing	Item	Width (inches)	Description
	CB393	36	For 36-39 wide units
	CB503	48	For 48-50 wide units


Frame Spacers	Item	Depth (inches)	Description
	R3FC.0061	1/4	Frame Spacer 1/4
	R3FC.0301	1 1/5	Frame Spacer 1 1/5
	R3FC.0051	2	Frame Spacer 2
	R3FC.3101	4	Frame Spacer 4
	R3FC.3001	12	Frame Spacer 12

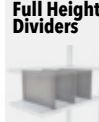
Shelves	Item	W x D (in)	Cpty (lbs)	Description
	S3618.HGV2	36 x 18	600	Shelf Galvanized
	S3624.HGV2	36 x 24	600	Shelf Galvanized
	S1239.HGV2	39 x 12	600	Shelf Galvanized
	S1639.HGV2	39 x 16	600	Shelf Galvanized
	S2039.HGV2	39 x 20	600	Shelf Galvanized
	S2439.HGV2	39 x 24	600	Shelf Galvanized
	S3239.XGV2	39 x 32	1,000	Shelf Galvanized
	S1848.XGV2	48 x 18	1,000	Shelf Galvanized
	S2448.XGV2	48 x 24	1,000	Shelf Galvanized
	S1650.HGV2	50 x 16	600	Shelf Galvanized
	S2050.XGV2	50 x 20	1,000	Shelf Galvanized
	S2450.XGV2	50 x 24	1,000	Shelf Galvanized
	S3250.XGV2	50 x 32	1,000	Shelf Galvanized


Beams	Item	Width (inches)	Description
	R3LB.39	39	Support beam for 39" wide units
	R3LB.50	50	Support beam for 50" wide units

Infill Inserts	Item	Depth (inches)	Description
	R3IFP.12	12	Shelf inserts for 12" deep shelves
	R3IFP.16	16	Shelf inserts for 16" deep shelves
	R3IFP.20	20	Shelf inserts for 20" deep shelves
	R3IFP.24	24	Shelf inserts for 24" deep shelves


Bin Front	Item	H x W (inches)	Description
	BF.1539	1.5 x 39	Bin front for 39" wide units
	BF.1550	1.5 x 50	Bin front for 50" wide units
	BF.3539	3.5 x 39	Bin front for 39" wide units
	BF.3550	3.5 x 50	Bin front for 50" wide units

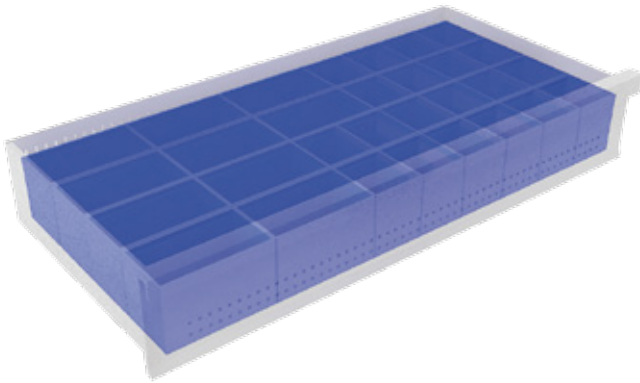
Rear Stops	Item	H x W (inches)	Description
	RS.391	2 x 39	Rear stop for 39" wide units
	RS.501	2 x 50	Rear stop for 50" wide units


Full Height Dividers	Item	H x D (inches)	Description
	FD1213	13 x 12	For 12" deep units
	FD1613	13 x 16	For 16" deep units
	FD2413	13 x 24	For 24" deep units

Shelf Dividers	Item	H x D (inches)	Description
	HD1604S.PL	4 x 15	For 16" deep shelves
	HD1804S.PL	4 x 17	For 18" deep shelves
	HD2004S.PL	4 x 19	For 20" deep shelves
	HD2404S.PL	4 x 23	For 24" deep shelves
	HD3204S.W	4 x 31	For 32" deep shelves
	HD1607S.PL	7 x 15	For 16" deep shelves
	HD1807S.PL	7 x 17	For 18" deep shelves
	HD2007S.PL	7 x 19	For 20" deep shelves
	HD2407S.PL	7 x 23	For 24" deep shelves
	HD3207S.W	7 x 31	For 32" deep shelves
	HD1610W	10 x 15	For 16" deep shelves
	HD1810W	10 x 17	For 18" deep shelves
	HD2010W	10 x 19	For 20" deep shelves
	HD2410W	10 x 23	For 24" deep shelves




Base Rail	Item	H x W (inches)	Description
	R3BF.39	2 x 39	Base Rail
	R3BF.50	2 x 50	Base Rail



Drawers Sets	Item	H x W x D (inches)	Load Capacity (lbs)	Description
	DRS.163904	4 x 39 x 16	150	Includes hardware
	DRS.163908	8 x 39 x 16	150	Includes hardware
	DRS.203904	4 x 39 x 20	150	Includes hardware
	DRS.203908	8 x 39 x 20	150	Includes hardware
	DRS.243904	4 x 39 x 24	150	Includes hardware
	DRS.243908	8 x 39 x 24	150	Includes hardware
	DRS.205004	4 x 50 x 20	150	Includes hardware
	DRS.205008	8 x 50 x 20	150	Includes hardware
	DRS.245004	4 x 50 x 24	150	Includes hardware
	DRS.245008	8 x 50 x 24	150	Includes hardware

Drawers Dividers	Item	H x W x D (inches)	Compartments	Description
	SE5121	4 x 39 x 20	4	Includes hardware
	SE5141	4 x 39 x 20	8	Includes hardware
	SE5181	4 x 39 x 20	16	Includes hardware
	SE5122	8 x 39 x 20	4	Includes hardware
	SE5142	8 x 39 x 20	8	Includes hardware
	SE5182	8 x 39 x 20	16	Includes hardware
	SE6121	4 x 39 x 24	4	Includes hardware
	SE6141	4 x 39 x 24	8	Includes hardware
	SE6181	4 x 39 x 24	16	Includes hardware
	SE6122	8 x 39 x 24	4	Includes hardware
	SE6142	8 x 39 x 24	8	Includes hardware
	SE6182	8 x 39 x 24	16	Includes hardware

Drawers Inserts	Item	L x W x H (inches)	Color	Description
	EK030202.BL1	3 x 2 x 2	Blue	Sub-Container
	EK030402.BL1	4 x 3 x 2	Blue	Sub-Container
	EK070302.BL1	7 x 3 x 2	Blue	Sub-Container
	EK050304.BL1	5 x 3 x 4	Blue	Sub-Container



R3000 SHELVING SYSTEM

Solid Panels



Item	Dimensions H x D (inches)	Description
SP3.12085G1	85 x 12	Side Panel
SP3.16085G1	85 x 16	Side Panel
SP3.18085G1	85 x 18	Side Panel
SP3.20085G1	85 x 20	Side Panel
SP3.24085G1	85 x 24	Side Panel
SP3.32085G1	85 x 32	Side Panel
BP3.36085G1	85 x 36	Back Panel
BP3.3985G1	85 x 39	Back Panel
BP3.4885G1	85 x 48	Back Panel
BP3.5085G1	85 x 50	Back Panel
CP3685G3	85 x 36	Center Panel
CP3985G3	85 x 39	Center Panel
CP4885G3	85 x 48	Center Panel
CP5085G3	85 x 50	Center Panel

Wire Panels



Item	Dimensions H x D (inches)	Description
SP3.16085W1	85 x 16	Side Panel
SP3.18085W1	85 x 18	Side Panel
SP3.20085W1	85 x 20	Side Panel
SP3.24085W1	85 x 24	Side Panel
BP3.36085W1	85 x 36	Back Panel
BP3.39085W1	85 x 39	Back Panel
BP3.4885W1	85 x 48	Back Panel
BP3.5085W1	85 x 50	Back Panel



Doors

Item	Dimensions H x D (inches)	Description
DS.3985K	85 x 39	Door Set



WELCOME

QUICK SHIP PROGRAM

SHELVING & CABINETS

CONTAINERS & BINS

WAREHOUSE SOLUTIONS

WELCOME

QUICK SHIP PROGRAM

SHELVING & CABINETS

CONTAINERS & BINS

WAREHOUSE SOLUTIONS



R3000 Tire Rack

Wheel and rim storage needs to be efficient, save space, and meet certain safety requirements. In addition, shelving systems should be flexible and have the ability to grow with your business. Tire Rack Systems from SSI SCHAEFER meet precisely those requirements. Storing wheels and rims with the R3000 Tire Rack System is both easy and practical. Specially shaped horizontal beams for tires and rims are simply hung by prefabricated upright frames without using bolts, and is engineered to reinforce the shelving bay, which increases safety.

The individual levels are adjustable at any time in increments of 2". From single to double units, including dynamic storage and mobile systems, SSI SCHAEFER has what you need.



R3000 TIRE RACK FEATURES

- Versatile and extends or combines with other R3000 shelving units and components
- Simple to assemble and install. Frames ship assembled, beams simply snap into the posts
- Beams can be adjusted in 2" increments
- Frames have lugs on both sides to accommodate future expansions

Tire Rack Units

W x D (inches)	85"H (inches) Starter	85"H (inches) Add-on	Levels	118"H (inches) Starter	118"H (inches) Add-on	Levels
39 x 16	R3TR.853916S3	R3TR.853916A3	3	R3TR.1183916S4	R3TR.1183916A4	4
50 x 16	R3TR.855016S3	R3TR.855016A3	3	R3TR.1185016S4	R3TR.1185016A4	4
79 x 16	R3TR.857916S3	R3TR.857916A3	3	R3TR.1187916S4	R3TR.1187916A4	4
39 x 44	R3TR.853944S3	R3TR.853944A3	3	R3TR.1183944S4	R3TR.1183944A4	4
50 x 44	R3TR.855044S3	R3TR.855044A3	3	R3TR.1185044S4	R3TR.1185044A4	4
79 x 44	R3TR.857944S3	R3TR.857944A3	3	R3TR.1187944S4	R3TR.1187944A4	4

Other Automotive Accessories

Bulk & Tire Beams	Item	W (inches)	Load Capacity per level (lbs)	Description
	R3ZBM.39	39	650	Bulk Beam
	R3ZBM.50	50	650	Bulk Beam
	R3ZBM.79	79	650	Bulk Beam
	R3TB.39	39	650	Tire Beam
	R3TB.50	50	650	Tire Beam
	R3TB.79	79	650	Tire Beam

Vertical Dividers	Item	H (inches)	Description
	R3VDR.007	6.5	Vertical Divider
	R3VDR.012	12	Vertical Divider
	R3VDR.035	35	Vertical Divider

Horizontal Dividers	Item	W (inches)	Description
	R3HDR.16	16	Horizontal Bay Divider
	R3HDR.32	32	Horizontal Bay Divider

Item	Description
R3VDRP	Protective coating adhesive
WDS32	Wood Deck Support 32 deep



R3000 Gravity

Increase visibility and efficiency on assembly line operations and fast-movers picking applications with the R3000 Gravity System. When containers are set in an angle position, it improves product visibility to each picker. This change in visibility significantly impacts the time required to fulfill operation processes.

With replacement totes ready to slide down when needed, virtually zero downtime is achieved. Bottom shelves are easily inverted to move empty containers away from the process, which enables a smooth transition.



R3000 GRAVITY FEATURES

- Increase productivity of your assembly line
- Bottom shelves can be inverted to return empty containers
- Pre-assembled frames make installation a quick and smooth process.
- Footplates included with every unit

Gravity R3000

H x D x W (inches)	Starter	Add-on	Levels	Extra level
85 x 40 x 39	R3GS.853940	R3GA.853940	5	R3GL.3940
85 x 48 x 39	R3GS.853948	R3GA.853948	5	R3GL.3948
85 x 64 x 39	R3GS.853964	R3GA.853964	5	R3GL.3964
85 x 40 x 50	R3GS.855040	R3GA.855040	5	R3GL.5040
85 x 48 x 50	R3GS.855048	R3GA.855048	5	R3GL.5048
85 x 64 x 50	R3GS.855064	R3GA.855064	5	R3GL.5064

Tilted Brackets	Item	Description
	R3SBR	Gravity Tilted Right Bracket
	R3SBL	Gravity Tilted Left Bracket

Beams	Item	Width (inches)	Description
	R3GFB39	39	Gravity Front Beam
	R3GFB50	50	Gravity Front Beam
	R3GBB39	39	Gravity Back Beam
	R3GBB50	50	Gravity Back Beam

Side Rails	Item	Depth (inches)	Description
	R3GSR16	16	Gravity Side Rails
	R3GSR20	20	Gravity Side Rails
	R3GSR24	24	Gravity Side Rails
	R3GSR32	32	Gravity Side Rails

Shelf Side Rails	Item	Depth (inches)	Description
	R3GLR39	24	Gravity Shelf Guide Rail
	R3GLR50	32	Gravity Shelf Guide Rail



R3000 Cantilever Storage

The R3000 Cantilever Storage system features adjustable brackets and shelves. Ideal for storing long goods or other non-standard sized items. From plastic tubing to furniture, you'll find that the R3000 Cantilever Shelving is a great storage option for an array of applications.

R3000 CANTILEVER FEATURES

- Versatile and extends or combines with other R3000 shelving units and components
- Simple to assemble and install. Columns ship assembled, beams simply snap into the posts
- Shelves and brackets are adjustable in 2" increments
- 220 Lbs. of load capacity per pair of brackets



R3000 Cantilever

H x D (inches)	Starter Set	Add-on Set
80 x 39	R3CFS	R3CFA



Arms	Item	Depth (inches)	Description
	R3CA1	16	Cantilever Arm
	R3CA2	20	Cantilever Arm

Divider Pin	Item	Description
	R3CDP	Cantilever Arm Divider Pin

Trays	Item	Depth (inches)	Description
	R3CT1	16	Cantilever Tray

Tray Dividers	Item	Depth (inches)	Description
	R3CTD	16	Cantilever Tray Divider

On-Line Gravity shelving is specifically engineered for assembly line production and operations

On-line Shelving from SSI SCHAEFER is specifically designed for assembly line production. With the shelves angled at 15°, employees can easily see and pick the parts they need. New parts are supplied from the back to guarantee continuous production. Bottom shelves can invert so that empty containers slide out of the way. On-Line shelving offers a cost-efficient stock and storage solution for assembly line operations and is an effective way to optimize space within an assembly line process. Units can be used with casters to increase flexibility. Pre-assembled frames make installation a quick and smooth process. All sizes available in stock, ready to ship for fast and quality service.



ON-LINE GRAVITY FEATURES

- Increase productivity of your assembly line
- Double box-style shelves support 550 lbs
- Bottom shelves invert to return empty containers
- Pre-assembled frames make installation a quick and smooth process
- Footplates included with every unit



Single Deep Galvanized

H x W x D (inches)	Starter Straight	Add-on Straight	Starter Tilted	Add-on Tilted	Levels
60 x 39 x 20	OLSU.2039G60V	OLAU.2039G60V	OLSU.2039S60V	OLAU.2039S60V	4
60 x 39 x 24	OLSU.2439G60V	OLAU.2439G60V	OLSU.2439S60V	OLAU.2439S60V	4
60 x 39 x 32	OLSU.3239G60V	OLAU.3239G60V	OLSU.3239S60V	OLAU.3239S60V	4
60 x 48 x 24	OLSU.2448G60V	OLAU.2448G60V	OLSU.2448S60V	OLAU.2448S60V	4
60 x 50 x 20	OLSU.2050G60V	OLAU.2050G60V	OLSU.2050S60V	OLAU.2050S60V	4
60 x 50 x 24	OLSU.2450G60V	OLAU.2450G60V	OLSU.2450S60V	OLAU.2450S60V	4
60 x 50 x 32	OLSU.3250G60V	OLAU.3250G60V	OLSU.3250S60V	OLAU.3250S60V	4
79 x 39 x 20	OLSU.2039GV	OLAU.2039GV	OLSU.2039SV	OLAU.2039SV	5
79 x 39 x 24	OLSU.2439GV	OLAU.2439GV	OLSU.2439SV	OLAU.2439SV	5
79 x 39 x 32	OLSU.3239GV	OLAU.3239GV	OLSU.3239SV	OLAU.3239SV	5
79 x 48 x 24	OLSU.2448GV	OLAU.2448GV	OLSU.2448SV	OLAU.2448SV	5
79 x 50 x 20	OLSU.2050GV	OLAU.2050GV	OLSU.2050SV	OLAU.2050SV	5
79 x 50 x 24	OLSU.2450GV	OLAU.2450GV	OLSU.2450SV	OLAU.2450SV	5
79 x 50 x 32	OLSU.3250GV	OLAU.3250GV	OLSU.3250SV	OLAU.3250SV	5





Straight



Tilted



Straight-Tilted



Double Tilted

Double Deep Galvanized

H x W x D (inches)	Starter Straight	Add-on Straight	Starter Tilted	Add-on Tilted	Starter Straight-Tilted	Add-on Straight-Tilted	Starter Double Tilted	Add-on Double Tilted	Levels
60 x 39 x 40	OLSU.4039G60V	OLAU.4039G60V	OLSU.4039S60V	OLAU.4039S60V	OLSU.4039H60V	OLAU.4039H60V	OLSU.4039Z60V	OLSU.4039Z60V	4
60 x 39 x 48	OLSU.4839G60V	OLAU.4839G60V	OLSU.4839S60V	OLAU.4839S60V	OLSU.4839H60V	OLAU.4839H60V	OLSU.4839Z60V	OLAU.4839Z60V	4
60 x 39 x 64	OLSU.6439G60V	OLAU.6439G60V	OLSU.6439S60V	OLAU.6439S60V	OLSU.6439H60V	OLAU.6439H60V	OLSU.6439Z60V	OLAU.6439Z60V	4
60 x 48 x 48	OLSU.4848G60V	OLAU.4848G60V	OLSU.4848S60V	OLAU.4848S60V	OLSU.4848H60V	OLAU.4848H60V	OLSU.4848Z60V	OLAU.4848Z60V	4
60 x 50 x 40	OLSU.4050G60V	OLAU.4050G60V	OLSU.4050S60V	OLAU.4050S60V	OLSU.4050H60V	OLAU.4050H60V	OLSU.4050Z60V	OLAU.4050Z60V	4
60 x 50 x 48	OLSU.4850G60V	OLAU.4850G60V	OLSU.4850S60V	OLAU.4850S60V	OLSU.4850H60V	OLAU.4850H60V	OLSU.4850Z60V	OLAU.4850Z60V	4
79 x 39 x 40	OLSU.4039GV	OLAU.4039GV	OLSU.4039SV	OLAU.4039SV	OLSU.4039HV	OLAU.4039HV	OLSU.4039ZV	OLAU.4039ZV	5
79 x 39 x 48	OLSU.4839GV	OLAU.4839GV	OLSU.4839SV	OLAU.4839SV	OLSU.4839HV	OLAU.4839HV	OLSU.4839ZV	OLAU.4839ZV	5
79 x 39 x 64	OLSU.6439GV	OLAU.6439GV	OLSU.6439SV	OLAU.6439SV	OLSU.6439HV	OLAU.6439HV	OLSU.6439ZV	OLAU.6439ZV	5
79 x 48 x 48	OLSU.4848GV	OLAU.4848GV	OLSU.4848SV	OLAU.4848SV	OLSU.4848HV	OLAU.4848HV	OLSU.4848ZV	OLAU.4848ZV	5
79 x 50 x 40	OLSU.4050GV	OLAU.4050GV	OLSU.4050SV	OLAU.4050SV	OLSU.4050HV	OLAU.4050HV	OLSU.4050ZV	OLAU.4050ZV	5
79 x 50 x 48	OLSU.4850GV	OLAU.4850GV	OLSU.4850SV	OLAU.4850SV	OLSU.4850HV	OLAU.4850HV	OLSU.4850ZV	OLAU.4850ZV	5

Extra Single Shelves Galvanized

W x D (inches)	Straight	Tilted
39 x 20	OLSK.2039GV	OLSK.2039SV
39 x 24	OLSK.2439GV	OLSK.2439SV
39 x 32	OLSK.3239GV	OLSK.3239SV
48 x 24	OLSK.2448GV	OLSK.2448SV
50 x 20	OLSK.2050GV	OLSK.2050SV
50 x 24	OLSK.2450GV	OLSK.2450SV
50 x 32	OLSK.3250GV	OLSK.3250SV

Extra Double Shelves Galvanized

W x D (inches)	Straight	Tilted	Straight- Tilted	Double Tilted
39 x 40	OLSK.4039GV	OLSK.4039SV	OLSK.4039HV	OLSK.4039ZV
39 x 48	OLSK.4839GV	OLSK.4839SV	OLSK.4839HV	OLSK.4839ZV
39 x 64	OLSK.6439GV	OLSK.6439SV	OLSK.6439HV	OLSK.6439ZV
48 x 48	OLSK.4848GV	OLSK.4848SV	OLSK.4848HV	OLSK.4848ZV
50 x 40	OLSK.4050GV	OLSK.4050SV	OLSK.4050HV	OLSK.4050ZV
50 x 48	OLSK.4850GV	OLSK.4850SV	OLSK.4850HV	OLSK.4850ZV

ON-LINE GRAVITY SHELVING

Mobile Galvanized

H x W x D (inches)	Straight	Tilted	Levels
68 x 39 x 20	OLMU.2039GV	OLMU.2039SV	4
68 x 39 x 24	OLMU.2439GV	OLMU.2439SV	4
68 x 39 x 32	OLMU.3239GV	OLMU.3239SV	4
68 x 48 x 24	OLMU.2448GV	OLMU.2448SV	4
68 x 50 x 20	OLMU.2050GV	OLMU.2050SV	4
68 x 50 x 24	OLMU.2450GV	OLMU.2450SV	4
68 x 50 x 32	OLMU.3250GV	OLMU.3250SV	4

Components

Item	Description
CASTER.FIXED24	On-Line Shelving Caster Fixed (per pair)
CASTER.SWIV24	On-Line Shelving Caster Swivel with Brake (per pair)



WELCOME

QUICK SHIP PROGRAM



SHELVING & CABINETS

CONTAINERS & BINS

WAREHOUSE SOLUTIONS

KDR Gravity Flow Rack Shelving is designed for continuous picking of fast moving small parts

SSI SCHAEFER has combined the traditional incline shelf and roller live storage principles in the KDR Gravity Flow Rack Shelving, creating a non-powered storage and retrieval system. Gravity flow racks reduce travel time and increases order fulfillment speed, while providing an organized, high-density storage system. Designed for fast-moving small to medium-sized parts with high volume, it offers a perfect blend of heavy-duty

ruggedness and ergonomics. The KDR Gravity Flow Rack shelving is ideal for line-side operations and traditional FIFO (first-in / first-out) applications. KDR levels are fully adjustable in 0.25" height or 1" angle increments. Width between the roller tracks is also adjustable in 0.1875" increments, which enables the use of virtually any container. KDR Systems are fully compatible with SSI SCHAEFER bins and containers.

GRAVITY FLOW RACK SHELVING FEATURES

- Starter units include 2 frames with anchors, shims and top caps, 4 beams and 3 Gravity Flow Levels. Guides and Rollers qty varies per width, check size details for additional information
- KDR levels are fully adjustable in 0.25" high or 1" angle increments for improved ergonomics
Rollers & guides adjustable in 0.1875" increments across the width to fit any container
- Levels can hold up to 1,000 lbs, for a maximum 5,000 lbs per complete pallet rack unit (not shown)
- 4 bolts is all it takes to build the levels. The rest of the items simply snap and lock in for convenient hassle-free assembly



KDR Gravity Flow Rack Shelving

Shelving W x D x H (inches)	Levels	Per level		Starter Unit	Add-on Unit	Extra Level	Extra Roller	Extra Guide
		Rollers	Guides					
53 x 41 x 79	3	6	2	KDRS.5341	KDRA.5341	KDRL.5341	KR28S.0970C	KTL.0955C
53 x 61 x 79	3	6	2	KDRS.5361	KDRA.5361	KDRL.5361	KR28S.1470C	KTL.1455C
53 x 76 x 79	3	6	2	KDRS.5376	KDRA.5376	KDRL.5376	KR28S.1845C	KTL.1830C
53 x 96 x 79	3	6	2	KDRS.5396	KDRA.5396	KDRL.5396	KR28S.2445C	KTL.2430C
53 x 123 x 79	3	6	2	KDRS.5312	KDRA.5312	KDRL.5312	KR28S.3045C	KTL.3030C
71 x 41 x 79	3	8	3	KDRS.7141	KDRA.7141	KDRL.7141	KR28S.0970C	KTL.0955C
71 x 61 x 79	3	8	3	KDRS.7161	KDRA.7161	KDRL.7161	KR28S.1470C	KTL.1455C
71 x 76 x 79	3	8	3	KDRS.7176	KDRA.7176	KDRL.7176	KR28S.1845C	KTL.1830C
71 x 96 x 79	3	8	3	KDRS.7196	KDRA.7196	KDRL.7196	KR28S.2445C	KTL.2430C
71 x 123 x 79	3	8	3	KDRS.7112	KDRA.7112	KDRL.7112	KR28S.3045C	KTL.3030C
87 x 41 x 79	3	10	4	KDRS.8741	KDRA.8741	KDRL.8741	KR28S.0970C	KTL.0955C
87 x 61 x 79	3	10	4	KDRS.8761	KDRA.8761	KDRL.8761	KR28S.1470C	KTL.1455C
87 x 76 x 79	3	10	4	KDRS.8776	KDRA.8776	KDRL.8776	KR28S.1845C	KTL.1830C
87 x 96 x 79	3	10	4	KDRS.8796	KDRA.8796	KDRL.8796	KR28S.2445C	KTL.2430C
87 x 123 x 79	3	10	4	KDRS.8712	KDRA.8712	KDRL.8712	KR28S.3045C	KTL.3030C
106 x 41 x 79	3	12	5	KDRS.0641	KDRA.0641	KDRL.0641	KR28S.0970C	KTL.0955C
106 x 61 x 79	3	12	5	KDRS.0661	KDRA.0661	KDRL.0661	KR28S.1470C	KTL.1455C
106 x 76 x 79	3	12	5	KDRS.0676	KDRA.0676	KDRL.0676	KR28S.1845C	KTL.1830C
106 x 96 x 79	3	12	5	KDRS.0696	KDRA.0696	KDRL.0696	KR28S.2445C	KTL.2430C
106 x 123 x 79	3	12	5	KDRS.0612	KDRA.0612	KDRL.0612	KR28S.3045C	KTL.3030C

KDR GRAVITY FLOW



WELCOME

QUICK SHIP PROGRAM

SHELVING & CABINETS

CONTAINERS & BINS

WAREHOUSE SOLUTIONS

Guides	Item	Depth (inches)	Description
	KTL.0955C	41	Gravity Flow Rack Guide
	KTL.1455C	61	Gravity Flow Rack Guide
	KTL.1830C	76	Gravity Flow Rack Guide
	KTL.2430C	96	Gravity Flow Rack Guide
	KTL.3030C	123	Gravity Flow Rack Guide

Pallet Rack Level Guide	Item	D (inches)	Description
	KTL.1255C	52	Gravity Flow Rack Guide
	KTL.2430C	96	Gravity Flow Rack Guide

Rollers	Item	Depth (inches)	Description
	KR28S.0970C	41	Gravity Flow Rack Roller
	KR28S.1470C	61	Gravity Flow Rack Roller
	KR28S.1845C	76	Gravity Flow Rack Roller
	KR28S.2445C	96	Gravity Flow Rack Roller
	KR28S.3045C	123	Gravity Flow Rack Roller

Pallet Rack Rollers	Item	D (inches)	Description
	KR28S.1270C	52	Gravity Flow Rack Roller
	KR28S.2445C	96	Gravity Flow Rack Roller

Pallet Rack Levels with Rollers and Guides	Item	W x D (inches)	Description
	KDRPL.052096	96 x 52	Extra Level Pallet Rack. Kit includes 5 Guides and 12 Rollers tracks
	KDRPL.096096	96 x 96	Extra Level Pallet Rack. Kit includes 5 Guides and 12 Rollers tracks

Pallet Rack Levels	Item	W x D (inches)	Description
	KDRSL.052096	96 x 52	Gravity Flow Rack Level
	KDRSL.096096	96 x 96	Gravity Flow Rack Level

Safix™ Bin Cabinets, the ideal organizer for your small parts at your workshop. ---

Safix™ Bin Cabinets offer the best use of space in small areas. Protect small parts from dust accumulation or theft. These cabinets are an ideal organizer for the office, workshop, or warehouse space. Available in a variety of heights and widths, you'll find an array of sizes to fit most applications. Cabinets are available with and without doors and can be ordered with or without bins. Available in four different bin colors to choose from; blue, red, green, and yellow.

SAFIX™ BIN CABINETS FEATURES

- Enamel gray finish and galvanized steel shelves
- Doors equipped with secure locks and recessed handles
- Adjustable shelves in 1" increments
- Complete cube utilization



Safix™ Cabinets

#Stock	H x W x D (inches)	Levels	Bin Quantity	Bin Information H x W x D (inches)
FSCH.12D	80 x 27 x 10	12	52	52 Bins (5.9 x 9.2 x 4.8)
FSCH.15D	80 x 27 x 10	15	82	54 Bins (4.3 x 6.5 x 3) / 28 Bins (5.9 x 9.2 x 4.8)
FSCH.18D	80 x 27 x 10	18	114	114 Bins (4.6 x 6.5 x 3)

Doors and bins included



CABINETS

WELCOME

QUICK SHIP PROGRAM

SHELVING & CABINETS

CONTAINERS & BINS

WAREHOUSE SOLUTIONS

STACK UP WITH STORAGE, TRANSPORT, AND ASSEMBLY CAPABILITIES FROM SSI SCHAEFER

SSI SCHAEFER offers container systems, which are engineered for durability and performance. Today, SSI SCHAEFER has one of the largest selections of containers, bins, and complete systems for storage, automation, transport, and assembly. Each container and bin is designed with ergonomics for easy material handling and picking processes. Container systems are designed to stack or nest for easy storage capabilities. Plus, each unit is sized to stack or cross stack for easy accessibility to reach stored goods.

Gain sustainability too, all containers and bins are manufactured with sustainability in mind and are made with 100% recyclable high density polypropylene (HDPE), polyethylene, and polystyrene.



WELCOME

QUICK SHIP PROGRAM

SHELVING & CABINETS

CONTAINERS & BINS

WAREHOUSE SOLUTIONS



PLASTIC BINS, FOR SMALL PARTS STORAGE AND PICKING

Plastic Bins are ideal for small parts storage in shelving units, bin racks, and bin carts. Bins can be labeled for optimal production processes and increased productivity.

Manufactured by SSI SCHAEFER, which uses heavy-duty FDA approved polypropylene, polyethylene, and polystyrene and virtually lasts forever. SSI SCHAEFER bins resist oils and grease and are impervious to most chemicals. In addition, SSI SCHAEFER has the most complete selection of accessories to fit your special needs. Items like clear flaps, lids, covers, labels, holders, dividers, and bins are available in four different colors (blue, yellow, red, and green) in stock for fast delivery.

By purchasing original storage bins by SSI SCHAEFER, you'll know that your bins will last--unlike cheap imitations. With more than 80 years of warehouse experience, the SSI SCHAEFER name is synonymous with quality.

14/6 Straight Wall Stacking a versatile and good general purpose product line.

The SSI SCHAEFER family of 14/6 Straight Wall Stackable Bins are an optimal solution for industrial and food processing applications. Manufactured with heavy duty FDA approved HDPE, these bins feature solid flat walls for maximum cube capacity and easy cleaning. The ergonomic design with

recessed grip handle on two sides allows easier manual handling. The special bottom design allows bins to stack or inter-stack. Available in four popular colors: yellow, red, blue and green.

- 14/6 STRAIGHT WALL STACKABLE BINS FEATURES**
- Self-adhesive transparent Label Holders with side or top opening
 - Metallic Clip to hold orders
 - Sub-containers made from polystyrene
 - Recessed dust cover with finger hole for easy removal



14/6 Straight Wall Stackable Bin

Item	Outside dimensions L x W x H (inches/mm)	Inside dimensions L x W x H (inches/mm)	Load Capacity (lbs / Kg)	Colors			
				Blue	Yellow	Red	Green
1464.080605	8.2 x 5.9 x 4.8 / 210 x 150 x 123	7.4 x 4.8 x 4.6 / 190 x 123 x 119	22 / 10	BL1	YL1	RD1	GN1
1463.130906	12.2 x 8.2 x 5.7 / 310 x 210 x 145	11.2 x 7.2 x 5.5 / 285 x 183 x 142	44 / 20	BL1	YL1	RD1	GN1
1463.130908	12.2 x 8.2 x 7.7 / 311 x 210 x 197	11.2 x 7.1 x 7.6 / 286 x 182 x 194	44 / 20	BL1	-	-	-
1462.191303	18.3 x 12.3 x 2.8 / 465 x 314 x 72	16.9 x 10.9 x 2.7 / 430 x 279 x 69)	44 / 20	BL1	-	-	-
1462.191305	18.3 x 12.3 x 4.1 / 465 x 314 x 105	16.8 x 10.9 x 3.9 / 429 x 279 x 101)	44 / 20	BL1	-	-	-
1462.191308	18.3 x 12.3 x 7.8 / 465 x 314 x 198	16.7 x 10.9 x 7.6 / 426 x 278 x 194)	66 / 30	BL1	YL1	RD1	GN1
1462.191309	19.0 x 12.3 x 9.1 / 485 x 314 x 233	16.7 x 10.8 x 9.0 / 425 x 275 x 230)	66 / 30	BL1	-	-	-
1462.191312	18.3 x 12.3 x 11.7 / 465 x 314 x 298	16.6 x 10.7 x 11.5 / 423 x 272 x 294)	66 / 30	BL1	-	-	-
1461.261912	25.5 x 18.4 x 11.8 / 650 x 468 x 300	23.9 x 16.7 x 11.6 / 608 x 426 x 296)	88 / 40	BL1	-	-	-

14/6 Lids

Item	L x W (inches/mm)	Description
1461SD.2619OPA	26.0 x 19.0 / 660 x 482	14/6-1 Straight Wall Stackable Bin Lid White
1462SD.2619OPA	26.0 x 19.0 / 660 x 482	14/6-2 Straight Wall Stackable Bin Lid White
1463SD.1309OPA	13.0 x 9.0 / 330 x 228	14/6-3 Straight Wall Stackable Bin Lid White
1464SD.0806OPA	8.0 x 6.0 / 203 x 152	14/6-4 Straight Wall Stackable Bin Lid White

14/6 Insert Boxes

Item	L x W x H (inches / mm)	Description
EK070302.BL1	7.09 x 3.78 x 2.36 / 180 x 96 x 60	EK 1 Sub-Container Blue
EK030402.BL1	3.78 x 3.54 x 2.36 / 96 x 90 x 60	EK 2 Sub-Container Blue
EK030202.BL1	3.54 x 1.89 x 2.36 / 90 x 48 x 60	EK 3 Sub-Container Blue
EK050303.BL1	5.39 x 3.43 x 3.78 / 137 x 87 x 96	EK 111-N Sub-Container Blue

14/6 Order Clip

Item	Description
146.CLIP	Straight Wall Stackable Bin Order Clip



Easily find or pick parts even when stacked when using the LF Hopper container.

One of the most popular containers on the market, designed for the storage of high-density small parts. Made with injection molded heavy-duty FDA approved polypropylene, stackable bins resist oil, grease, and are unaffected by most chemicals for long term performance.

Ergonomically designed, recessed grip handle on back for easier manual handling.

LF CONTAINER FEATURES


- Made with injection molded heavy-duty FDA approved polypropylene
- Bins resist oil, grease, and are unaffected by most chemicals
- Double-wall construction for long term performance
- Recessed grip handle on back for easier manual handling
- Available in popular colors blue, yellow, green and red




LF Hopper Stackable Bins


Item	Outside dimensions L x W x H (inches/mm)	Inside dimensions L x W x H (inches/mm)	Load Capacity (lbs / Kg)	Stock	Colors
LF040402.OBL1	3.6 x 4.0 x 2.0 / 92 x 102 x 51	2.8 x 3.6 x 1.8 / 73 x 92 x 48	2.2 / 1	LF 110	Blue
LF060402.OBL1	6.6 x 4.0 x 2.0 / 168 x 103 x 52	5.9 x 3.9 x 1.9 / 152 x 99 x 49	2.2 / 1	LF 210	Blue
LF060503.OBL1	6.6 x 4.0 x 2.9 / 168 x 103 x 76	5.9 x 3.9 x 2.9 / 150 x 99 x 74	11.0 / 5	LF 211	Blue
LF090605.OBL1	9.2 x 5.9 x 4.8 / 234 x 150 x 122	8.2 x 5.6 x 4.7 / 209 x 144 x 120	22.0 / 10	LF 221	Blue
LF140806.OBL1	13.5 x 8.2 x 5.7 / 343 x 209 x 145	12.6 x 7.9 x 5.5 / 320 x 203 x 142	44.0 / 20	LF 321	Blue
LF140808.OBL1	13.5 x 8.2 x 7.8 / 343 x 209 x 200	12.6 x 7.9 x 7.7 / 320 x 203 x 197	44.0 / 20	LF 322	Blue
LF141906.OBL1	13.7 x 18.5 x 5.7 / 348 x 470 x 145	13.0 x 17.5 x 5.5 / 331 x 445 x 141	44.0 / 20	LF 351	Blue
LF200606.OBL1	19.6 x 6.1 x 5.6 / 500 x 156 x 143	18.1 x 5.8 x 5.3 / 461 x 148 x 137	44.0 / 20	LF 511	Blue
LF201206.OBL1	19.6 x 12.2 x 5.7 / 498 x 312 x 145	8.0 x 11.1 x 5.5 / 458 x 282 x 142	44.0 / 20	LF 531	Blue
LF201208.OBL1	19.6 x 12.2 x 7.8 / 498 x 312 x 200	18.0 x 11.1 x 7.7 / 458 x 282 x 197	44.0 / 20	LF 532	Blue
LF201212.OBL1	19.6 x 12.2 x 11.8 / 498 x 312 x 300	18.0 x 12.0 x 11.6 / 458 x 305 x 300	44.0 / 20	LF 533	Blue
LF201812.OBL1	19.6 x 18.5 x 11.8 / 500 x 470 x 300	18.1 x 17.1 x 11.6 / 460 x 435 x 295	88.0 / 40	LF 543	Blue
LF291812.OBL1	28.3 x 18.5 x 11.8 / 720 x 470 x 300	26.5 x 17.1 x 11.6 / 675 x 435 x 295	88.0 / 40	LF 743	Blue
LF060503.OYL1	6.6 x 4.0 x 2.9 / 168 x 103 x 76	5.9 x 3.9 x 2.9 / 150 x 99 x 74	11.0 / 5	LF 211	Yellow
LF090605.OYL1	9.2 x 5.9 x 4.8 / 234 x 150 x 122	8.2 x 5.6 x 4.7 / 209 x 144 x 120	22.0 / 10	LF 221	Yellow
LF140806.OYL1	13.5 x 8.2 x 5.7 / 343 x 209 x 145	12.6 x 7.9 x 5.5 / 320 x 203 x 142	44.0 / 20	LF 321	Yellow
LF201208.OYL1	19.6 x 12.2 x 7.8 / 498 x 312 x 200	18.0 x 11.1 x 7.7 / 458 x 282 x 197	44.0 / 20	LF 532	Yellow
LF060503.OGN1	6.6 x 4.0 x 2.9 / 168 x 103 x 76	5.9 x 3.9 x 2.9 / 150 x 99 x 74	11.0 / 5	LF 211	Green
LF090605.OGN1	9.2 x 5.9 x 4.8 / 234 x 150 x 122	8.2 x 5.6 x 4.7 / 209 x 144 x 120	22.0 / 10	LF 221	Green
LF140806.OGN1	13.5 x 8.2 x 5.7 / 343 x 209 x 145	12.6 x 7.9 x 5.5 / 320 x 203 x 142	44.0 / 20	LF 321	Green
LF201208.OGN1	19.6 x 12.2 x 7.8 / 498 x 312 x 200	18.0 x 11.1 x 7.7 / 458 x 282 x 197	44.0 / 20	LF 532	Green
LF060503.ORD1	6.6 x 4.0 x 2.9 / 168 x 103 x 76	5.9 x 3.9 x 2.9 / 150 x 99 x 74	11.0 / 5	LF 211	Red
LF090605.ORD1	9.2 x 5.9 x 4.8 / 234 x 150 x 122	8.2 x 5.6 x 4.7 / 209 x 144 x 120	22.0 / 10	LF 221	Red
LF140806.ORD1	13.5 x 8.2 x 5.7 / 343 x 209 x 145	12.6 x 7.9 x 5.5 / 320 x 203 x 142	44.0 / 20	LF 321	Red
LF201208.ORD1	19.6 x 12.2 x 7.8 / 498 x 312 x 200	18.0 x 11.1 x 7.7 / 458 x 282 x 197	44.0 / 20	LF 532	Red




Bin Dividers	Item	W x D (inches / mm)
	LFDV0402.WH1	4.0 x 2.0 / 102 x 51
	LFDV0503.WH1	5.0 x 3.0 / 127 x 76
	LFDV0605.WH1	6.0 x 5.0 / 152 x 127
	LFDV0606.WH1	6.0 x 6.0 / 152 x 152
	LFDV0806.WH1	8.0 x 6.0 / 203 x 152
	LFDV0808.WH1	8.0 x 8.0 / 203 x 203
	LFDV1206.WH1	12.0 x 6.0 / 305 x 152
	LFDV1208.WH1	12.0 x 8.0 / 305 x 203
LFDV1812.WH1	18.0 x 12.0 / 457 x 305	

Bin Covers	Item	L x W x H (inches / mm)
	LFDC.060503TR1	6.0 x 5.0 x 3.0 / 152 x 127 x 76
	LFDC.090605TR1	9.0 x 6.0 x 5.0 / 229 x 152 x 127
	LFDC.140806TR1	14.0 x 8.0 x 6.0 / 356 x 203 x 152
	LFDC.140808TR1	14.0 x 8.0 x 8.0 / 356 x 203 x 203
	LFDC.141906TR1	14.0 x 19.0 x 6.0 / 356 x 483 x 152
	LFDC.200606TR1	20.0 x 6.0 x 6.0 / 508 x 152 x 152
	LFDC.201206TR1	20.0 x 12.0 x 6.0 / 508 x 305 x 152
LFDC.201208TR1	20.0 x 12.0 x 8.0 / 508 x 305 x 203	



Bin Flaps	Item	H x D (inches / mm)	Description
	LFFLAP.14081TR1	14.0 x 8.0 / 356 x 203	Bin Flap Clear for LF140806
	LFFLAP.14082TR1	14.0 x 8.0 / 356 x 203	Bin Flap Clear for LF140808
	LFFLAP.20122TR1	20.0 x 12.0 / 508 x 305	Bin Flap Clear for LF201208
	LFFLAP.20123TR1	20.0 x 12.0 / 508 x 305	Bin Flap Clear for LF201212

EK Sub-Containers	Item	L x W x H (inches / mm)	Description
	EK050304.BL1	5.3 x 3.4 x 4.3 / 137 x 87 x 110	EK 111 Sub-Container Blue
	EK060505.BL1	6.8 x 5.3 x 4.3 / 174 x 137 x 110	EK 112 Sub-Container Blue
	EK110604.BL1	10.7 x 6.8 x 4.3 / 274 x 174 x 110	EK 113 Sub-Container Blue

LMB Plastic Bins, Vertical Storage System Container.

LMB containers specifically designed for LOGIMAT® and Vertical Lift Module Storage Systems (VLM).

VLM PLASTIC BINS FEATURES

- Designed to fit 800mm deep VLM trays
- Three widths and two heights with slots for dividers every 4"
- Each LMB bin comes with two dividers



LMB Bins

Item	Outside dimensions L x W x H (inches/mm)	Inside dimensions L x W x H (inches/mm)	Load Capacity (Gallons / Liters)	Stock	Colors
LMB811-2	31.5 x 3.9 x 3.7 / 800 x 100 x 95	30.4 x 2.9 x 3.7 / 774 x 74 x 93	1.4 gallons / 5.2 liters	LMB 811	Blue
LMB821-2	31.5 x 7.9 x 3.7 / 800 x 200 x 95	30.4 x 6.9 x 3.7 / 774 x 174 x 93	3.3 gallons / 12.4 liters	LMB 821	Blue
LMB822-2	31.5 x 7.9 x 7.7 / 800 x 200 x 195	30.4 x 6.9 x 7.6 / 774 x 174 x 193	6.8 gallons / 25.7 liters	LMB 822	Blue
LMB841-2	31.5 x 15.7 x 3.7 / 800 x 400 x 95	30.4 x 14.7 x 3.7 / 774 x 374 x 93	7.1 gallons / 26.7 liters	LMB 841	Blue
LMB842-2	31.5 x 15.7 x 7.7 / 800 x 400 x 195	30.4 x 3.7 x 7.6 / 774 x 374 x 193	14.7 gallons / 55.5 liters	LMB 842	Blue

Dividers



Item	W x H (inches / mm)	Description
LMB-T811	3.5 x 3.2 / 87 x 85	Divider for 811 Container
LMB-T821	7.5 x 3.2 / 186 x 85	Divider for 821 Container
LMB-T841	15.2 x 3.2 / 387 x 85	Divider for 841 Container
LMB-T822	7.5 x 7.2 / 186 x 185	Divider for 822 Container
LMB-T842	15.2 x 7.2 / 387 x 185	Divider for 842 Container



WELCOME

QUICK SHIP PROGRAM

SHELVING & CABINETS

CONTAINERS & BINS

WAREHOUSE SOLUTIONS

RK Shelf Bins, for small parts storage in shelving units, vertical lift modules or carousels.

Combine plastic shelf bins from SSI SCHAEFER with R3000 shelving units for optimal parts storage. Thanks to the modular design, bins achieve maximum cube utilization.

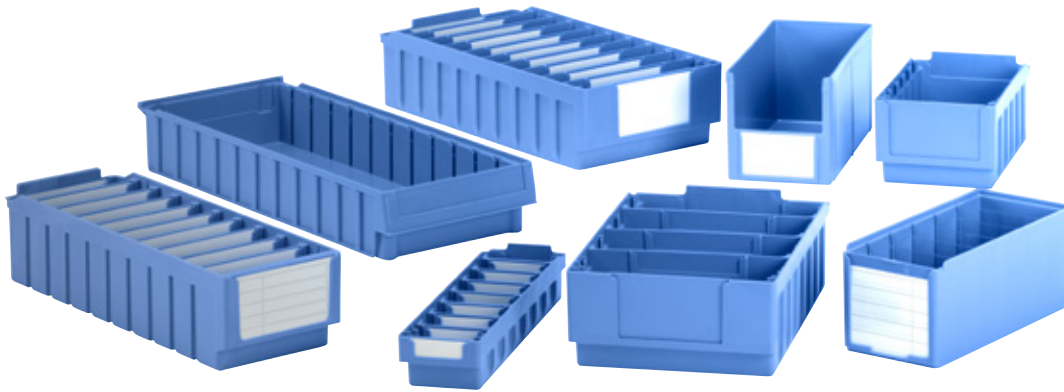
Manufactured by SSI SCHAEFER from high density FDA approved polyethylene and polystyrene, shelf bins withstand oils and grease, and are impervious to most chemicals.

Containers and dividers are available in blue. Label dividers for easy part organization.

Available in stock, ready to ship for fast and quality service.

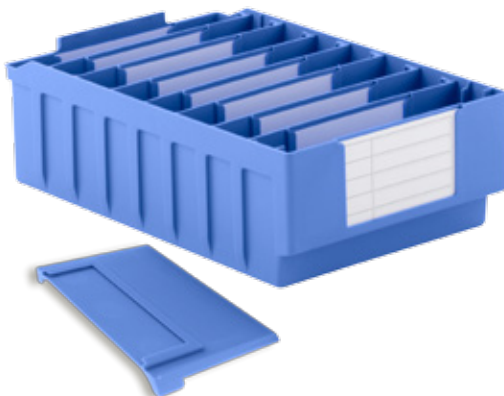
RK SHELF BINS FEATURES

- Made with injection molded heavy-duty polypropylene and polystyrene
- Bins resist oil, grease and are unaffected by most chemicals
- Specially designed for maximum cube utilization in your storage system
- Available in blue



RK Plastic Shelf Bins

Item	L x W x H (inches/ mm)	Compartments
RK300.BL1	11.8 x 5.3 x 4.7 / 300 x 135 x 120	6
RK321.BL1	11.4 x 6.4 x 4.5 / 290 x 162 x 115	6
RK400S.BL1	15.4 x 3.8 x 2.5 / 390 x 97 x 63	8
RK400.BL1	16.1 x 6.4 x 2.6 / 408 x 162 x 66	8
RK421.BL1	16.1 x 6.4 x 4.5 / 408 x 162 x 115	8
RK421B.BL1	15.4 x 9.6 x 4.5 / 390 x 243 x 115	8
RK500N.BL1	19.3 x 6.4 x 2.5 / 490 x 162 x 63	10
RK521.BL1	20 x 6.4 x 4.5 / 508 x 162 x 115	10
RK521B.BL1	19.3 x 9.6 x 4.5 / 490 x 243 x 115	10
RK619.BL1	24.4 x 4.6 x 3.5 / 620 x 116 x 90	12
RK629.BL1	24.4 x 9.1 x 3.5 / 620 x 232 x 90	12
RK621.BL1	23.2 x 6.4 x 4.5 / 590 x 162 x 115	12



RK Dividers	Item	W x H (inches / mm)	Description
	RKT300.TR1	6.0 x 5.0 / 152 x 127	Divider RKT300 Blue
	RKT321.BL1	7.0 x 5.0 / 178 x 127	Divider RKT321 Blue
	RKT400S.BL1	4.0 x 3.0 / 102 x 76	Divider RKT400S Blue
	RKT400.BL1	7.0 x 3.0 / 178 x 76	Divider RKT400 Blue
	RKT5421.BL1	5.0 x 7.0 / 127 x 178	Divider RKT421 Blue
	RKT5421B.BL1	5.0 x 10.0 / 127 x 254	Divider RKT421 Blue
	RKT500N.BL1	7.0 x 3.0 / 178 x 76	Divider RKT500N Blue
	RKT61.BL1	5.0 x 4.0 / 127 x 102	Divider RKT619 Blue
	RKT62.BL1	10.0 x 4.0 / 254 x 102	Divider RKT629 Blue

RK Labels*	Item	W x H (inches/mm)	Description
	RKE300.WH1	5.0 x 4.0 / 127 x 102	RK Shelf Bin Label RKE300
	RKE321.WH1	5.0 x 3.0 / 127 x 76	RK Shelf Bin Label RKE321
	RKE500N.WH1	5.0 x 1.0 / 127 x 25	RK Shelf Bin Label RKE500N
	RKE400S.WH1	3.0 x 1.0 / 76 x 25	RK Shelf Bin Label RKE400S
	RKE400.WH1	5.0 x 2.0 / 127 x 51	RK Shelf Bin Label RKE400
	RKE522S.WH1	5.0 x 1.0 / 127 x 25	RK Shelf Bin Label RKE522
	RKE619.WH1	5.0 x 4.0 / 127 x 102	RK Shelf Bin Label RKE619
	RKE629.WH1	9.0 x 4.0 / 229 x 102	RK Shelf Bin Label RKE629

*Sold in packs of 100.



WELCOME

QUICK SHIP PROGRAM

SHELVING & CABINETS

CONTAINERS & BINS

WAREHOUSE SOLUTIONS

THE LARGEST FAMILY OF MULTI-PURPOSE STRAIGHT WALL CONTAINERS PROVIDED BY SSI SCHAEFER

Stackable Containers are design for storage, distribution and work-in process applications, and demonstrate financial value by reducing shipping costs and eliminating the cost of purchasing and disposing of cardboard containers.

At the same time, SSI SCHAEFER containers reduce the impact on our environment. Regular stack, cross stack, trans stack, we have the right solution for your material handling needs. Maximize your storage space and flexibility while you

minimize your costs. These containers are injection-molded from high-density polypropylene or polyethylene to meet the most stringent quality requirements. Multiple colors and sizes available in stock for fast and quality service.

EF EURO-FIX CONTAINER. Sturdy yet lightweight and easy to clean.

EF straight wall containers are durable, lightweight, and work with 32" x 48", 40" x 48", and 48" x 48" systems. Plus, EF handheld containers withstand extreme temperatures, making them ideal for applications in heavy industrial or manufacturing facilities.

EF straight wall containers feature a smooth base and interior, which allows for maximum fill.

EF EURO-FIX CONTAINER FEATURES

- Available in 18 sizes, six footprints
- Heights from 3" to 16.5"
- Spacing, number and thickness of ribs add even more strength and years of life to the container
- Designed for high cube utilization and strength
- Made of polypropylene which makes the Euro-Fix economical, durable and easy to clean
- Available in conductive version
- Over 15 lids, clips and accessories
- Compatible with EFP 48 x 32 pallet system



SOLID BASE & SIDES




SOLID BASE & MESH SIDES



MESH BASE & MESH SIDES

EF containers

Outside dimensions L x W x H (inches/mm)	Inside dimensions L x W x H (inches/mm)	Capacity (Cu Ft)	Colors		Solid base & sides	Solid base & mesh sides	Mesh base & mesh sides
			Light Gray	Red			
7.9 x 5.8 x 4.6 / 200 x 148 x 117	6.0 x 4.2 x 4.5 / 153 x 106 x 114	0.07	GY1	RD1	EF2120	-	-
11.8 x 7.8 x 4.6 / 300 x 200 x 117	10 x 6.1 x 4.5 / 254 x 154 x 114	0.15	GY1	RD1	EF3120	-	-
11.8 x 7.8 x 6.7 / 300 x 200 x 170	10.0 x 6.0 x 6.6 / 253 x 153 x 168	0.23	GY1	RD1	EF3170	-	-
11.8 x 7.8 x 8.7 / 300 x 200 x 220	10.0 x 6.0 x 8.5 / 253 x 153 x 217	0.32	GY1	-	EF3220	-	-
15.7 x 11.8 x 3.0 / 400 x 300 x 75	14.1 x 10.2 x 2.9 / 359 x 259 x 73	0.24	GY1	-	EF4070	-	-
15.7 x 11.8 x 4.7 / 400 x 300 x 120	14.0 x 10.0 x 4.6 / 356 x 256 x 117	0.38	GY1	RD1	EF4120	-	-
			GY1	-	-	EF4121	-
15.7 x 11.8 x 4.7 / 400 x 300 x 120	14.0 x 10.0 x 4.5 / 356 x 256 x 114	1.60	GY1	-	-	-	EF4123
15.7 x 11.8 x 6.7 / 400 x 300 x 170	14.0 x 6.1 x 6.6 / 354 x 254 x 167	0.55	GY1	-	EF4170	-	-
15.7 x 11.8 x 8.7 / 400 x 300 x 220	14.0 x 10.0 x 8.5 / 355 x 255 x 217	0.71	GY1	RD1	EF4220	EF4221	-
15.7 x 11.8 x 4.7 / 400 x 300 x 120	14.0 x 10.0 x 4.6 / 356 x 256 x 117	2.30	GY1	RD1	-	-	EF4223
15.7 x 11.8 x 12.6 / 400 x 300 x 320	14.0 x 10.0 x 12.4 / 354 x 253 x 316	1.04	GY1	-	EF4320	-	-
23.6 x 15.7 x 4.7 / 600 x 400 x 120	21.8 x 13.9 x 4.6 / 553 x 353 x 117	0.82	GY1	-	EF6120	-	-
23.6 x 15.7 x 4.7 / 600 x 400 x 120	21.7 x 13.9 x 4.9 / 552 x 352 x 114	0.80	GY1	-	-	-	EF6123
23.6 x 15.7 x 7.1 / 600 x 400 x 180	21.8 x 13.9 x 6.9 / 553 x 353 x 176	1.25	GY1	-	EF6180	-	-
23.6 x 15.7 x 8.7 / 600 x 400 x 220	21.8 x 13.9 x 8.5 / 553 x 353 x 216	1.54	GY1	RD1	EF6220	EF6221	-
23.6 x 15.7 x 8.7 / 600 x 400 x 220	21.8 x 13.9 x 8.4 / 553 x 353 x 213	1.51	GY1	RD1	-	-	EF6223
23.6 x 15.7 x 12.6 / 600 x 400 x 320	21.8 x 13.9 x 12.4 / 553 x 353 x 316	2.25	GY1	RD1	EF6320	EF6321	-
23.6 x 15.7 x 12.6 / 600 x 400 x 320	21.9 x 13.9 x 12.3 / 553 x 353 x 313	2.23	GY1	RD1	-	-	EF6323
23.6 x 15.7 x 16.5 / 600 x 400 x 420	21.9 x 13.9 x 16.4 / 553 x 353 x 416	2.96	GY1	RD1	EF6420	EF6421	-
23.6 x 15.7 x 16.5 / 600 x 400 x 420	21.9 x 13.9 x 16.3 / 553 x 353 x 413	2.94	GY1	RD1	-	-	EF6423
31.5 x 23.7 x 12.6 / 800 x 600 x 320	29.6 x 21.8 x 12.4 / 753 x 553 x 316	4.59	GY1	RD1	EF8320	-	-

Lids	Item	L x W (inches / mm)	Description
	EFD21.GY1	7.9 x 5.9 / 200 x 150	Euro-Fix Container Lid Gray
	EFD32.GY1	11.8 x 7.9 / 300 x 200	Euro-Fix Container Lid Gray
	EFD43.GY1	15.7 x 11.8 / 400 x 300	Euro-Fix Container Lid Gray
	EFD64.GY1	23.6 x 15.7 / 600 x 400	Euro-Fix Container Lid Gray

Trolley	Item	Description
	EFTRLY2416.1GY1	Euro-Fix Roll Trolley Rubber Wheels 24 x 16 x 5 Gray

Inserts	Item	Description
	EFHC.GY1	Container Handle Insert Gray
	EFHC.RD1	Container Handle Insert Red

Accessories	Item	Description
	EFE	Euro-Fix Container Label Holder
	EFCLIP.M	Euro-Fix Lid Clip

SHE LIFTING TROLLEY FEATURES

- For containers 23.6" x 15.7" / 600 x 400 mm
 - Diameter of swivel casters 5" / 125 mm
 - Diameter of rigid castors 7.8" / 200 mm
 - Max. Load 44 Lbs. / 200 kg
 - Color - Painted blue-gray*
- (conductive material available upon request)
Product # 16170



ELB LIGHT CONTAINER. Lighter by design, yet extremely durable.

ELB straight wall containers are great for special applications, mail order items, food, or even electronics that need electro-static dissipative protection. Whatever the application, ELB can handle. With two attached lid options, items stay secure and dust-free.

An innovative lightweight handheld container, the ELB is durable but is light enough for everyday use.

Plus, the ELB is sensibly priced. Ergonomic grips allow for easy handling and carrying. Optional attached lids for greater security and three base options. The ELB is capable of carrying up to 150 pounds.

Great for electronics, food, retail, and special applications.




ELB CONTAINER FEATURES

- Available in 6 sizes
- Heights: 4.5" up to 12.6"
- Two attached lid options
- Polypropylene
- Three base options are available. SSI SCHAEFER stocks all ELB smooth bottom models

ELB Light Duty Straight Wall Containers

Product#	Outside dimensions L x W x H (inches/mm)	Inside dimensions L x W x H (inches/mm)	Colors
ELB4120.GY1	15.7 x 11.8 x 4.7 / 400 x 300 x 120	14.0 x 10.1 x 4.5 / 356 x 256 x 115	Gray
ELB4220.GY1	15.7 x 11.8 x 8.7 / 400 x 300 x 220	14.0 x 10.1 x 8.5 / 356 x 256 x 215	Gray
ELB6120.GY1	23.6 x 15.7 x 4.7 / 600 x 400 x 120	21.9 x 14.0 x 4.5 / 555 x 355 x 115	Gray
ELB6220.GY1	23.6 x 15.7 x 8.7 / 600 x 400 x 220	21.9 x 14.0 x 8.5 / 555 x 355 x 215	Gray
ELB6280.GY1	23.6 x 15.7 x 11.0 / 600 x 400 x 280	21.9 x 14.0 x 10.8 / 555 x 355 x 275	Gray
ELB6320.GY1	23.6 x 15.7 x 12.6 / 600 x 400 x 320	21.9 x 14.0 x 12.4 / 555 x 355 x 314	Gray

Lids	Item	L x W (inches / mm)	Description
	ELBD.43GY1	16.0 x 12.0 / 406 x 305	ELB 43 Lid, Gray
	ELBD.64GY1	24.0 x 16.0 / 610 x 406	ELB 64 Lid, Gray
	ELBDS.43GY1	16.0 x 12.0 / 406 x 305	ELB 43S Hinged Lid with clips, Gray
	ELBDS.64GY1	24.0 x 16.0 / 610 x 406	ELB 64S Hinged Lid with clips, Gray
	ELBDH.43GY1	16.0 x 12.0 / 406 x 305	ELB 43H 2-piece Hinged Lid with clips, Gray
	ELBDH.64GY1	24.0 x 16.0 / 610 x 406	ELB 64H 2-piece Hinged Lid with clips, Gray

STRAIGHT WALL CONTAINERS

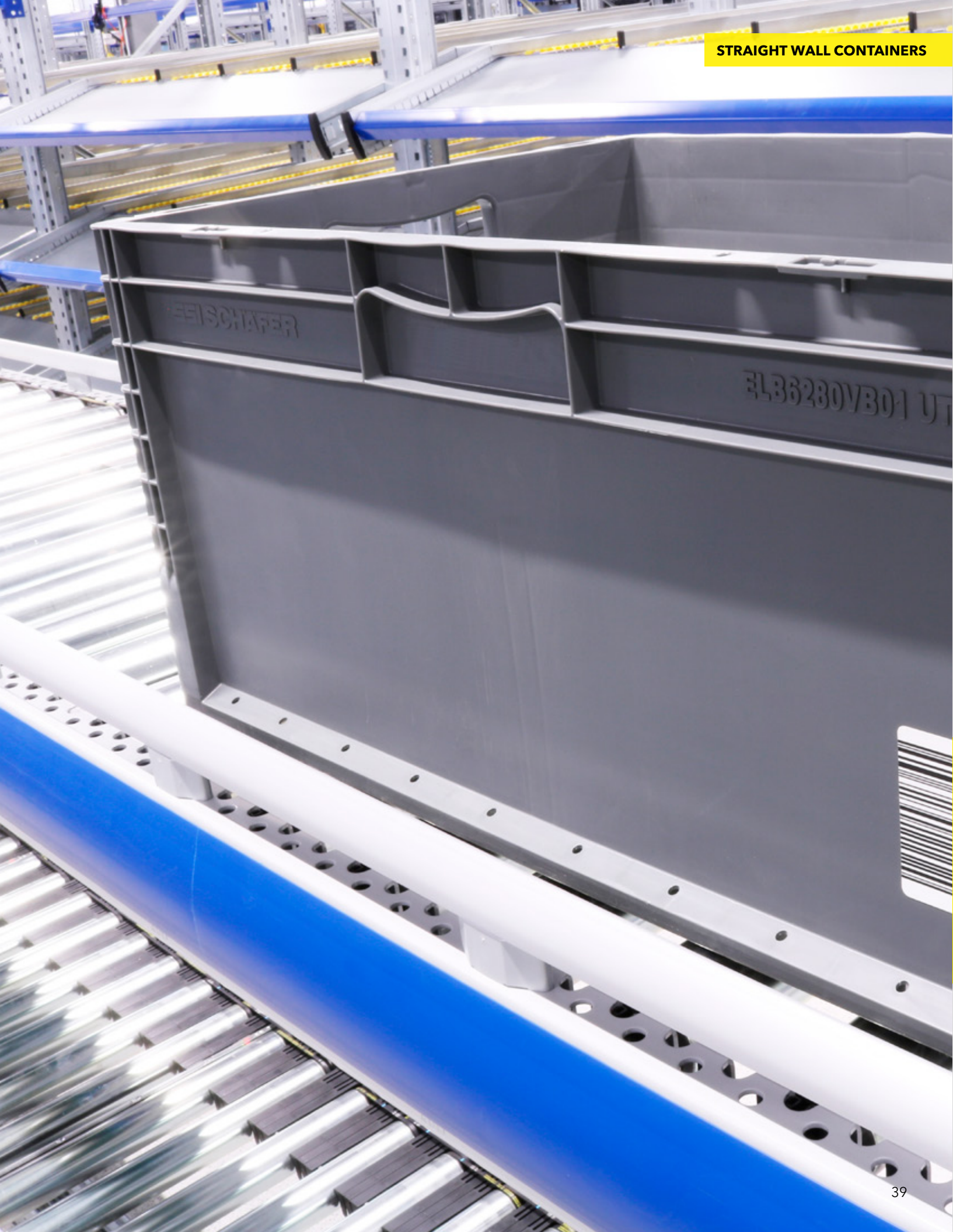
WELCOME

QUICK SHIP PROGRAM

SHELVING & CABINETS

CONTAINERS & BINS

WAREHOUSE SOLUTIONS



WELCOME

QUICK SHIP PROGRAM

SHELVING & CABINETS

CONTAINERS & BINS

WAREHOUSE SOLUTIONS



LTF CONTAINERS. An economical choice for medium-duty applications.

LTF containers feature a reinforced base with patented design for silent running on conveyor systems. This straight wall container features perpendicular sides for maximum usable internal space and specially designed corner posts to facilitate high stacking loads and easy cleaning.

Also, the LTF has a protected area for barcodes and are RFID compatible. The LTF is a great choice for medium-duty applications.

LTF Straight Wall Containers

Product#	Outside dimensions L x W x H (inches/mm)	Inside dimensions L x W x H (inches/mm)	Load Capacity (lbs / Kg)	Colors
LTF6120.1XRBL1	23.4 x 15.6 x 4.7 / 600 x 400 x 120	22.2 x 14.4 x 4.0 / 564 x 366 x 102	66 / 30	Blue
LTF6220.1XRBL1	23.4 x 15.6 x 8.7 / 600 x 400 x 220	22.2 x 14.4 x 8.0 / 564 x 366 x 202	66 / 30	Blue
LTF6280.1XRBL1	23.4 x 15.6 x 11.0 / 600 x 400 x 280	22.2 x 14.4 x 10.3 / 564 x 366 x 262	66 / 30	Blue
LTF6320.1XRBL1	23.4 x 15.5 x 12.6 / 600 x 400 x 320	22.2 x 14.4 x 11.9 / 564 x 366 x 302	66 / 30	Blue



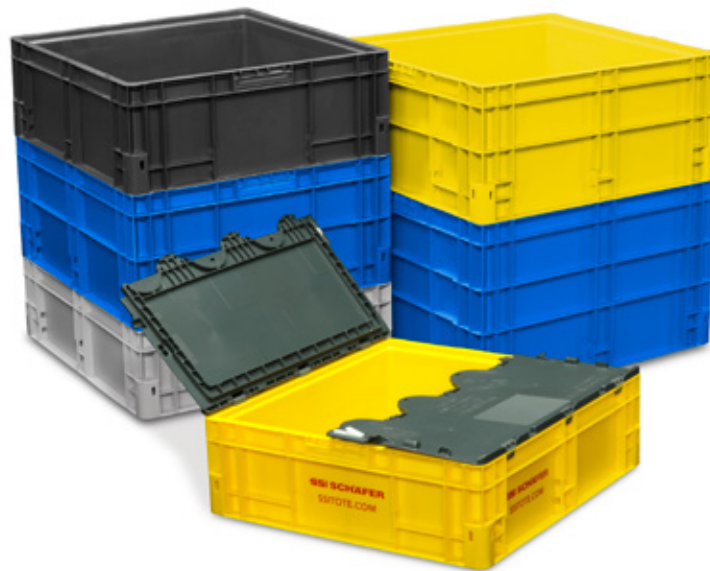
LTF CONTAINER FEATURES

- Stable impact surface for use in automatic mini-load systems rounded corner design for ease of use with conveyors
- Smooth walls for easy cleaning
- Double walled corner frames for high load stacking
- LTF containers come standard with a protected barcode area and are RFID compatible
- SSI SCHAEFER stocks reinforced bottom LTF containers. Other bottom options are available with minimum quantities

Maximize function and fit with the all new NF NEWSTAC®.

NF NewStac® containers from SSI SCHAEFER maximize function and minimize handling with features that support multiple industries. The NewStac lightweight design allows you to pack more products while complying with 33 lbs. handheld standards. In addition, a new sidewall design and rimless option provide uninterrupted surfaces for placards.

NF NewStac containers come in 17 sizes allowing for a more secure fit. You'll find a patented label pocket, which allows for easy labeling and protection from folding damage or accidental removal.



NF Straight Wall Containers

Product#	Outside dimensions L x W x H (inches/mm)	Inside dimensions L x W x H (inches/mm)	Colors
NF121504.XSBL2	14.9 x 11.9 x 4.0 / 378 x 302 x 102	13.1 x 9.5 x 3.5 / 333 x 241 x 127	Blue
NF121505.ASBL2	14.9 x 11.9 x 5.0 / 378 x 302 x 127	13.1 x 9.5 x 4.4 / 333 x 241 x 112	Blue
NF121507.ASBL2	14.9 x 11.9 x 7.5 / 378 x 302 x 191	13.1 x 9.5 x 6.9 / 333 x 241 x 175	Blue
NF121508.ASBL2	14.9 x 11.9 x 8.7 / 378 x 302 x 221	13.1 x 9.5 x 8.1 / 333 x 241 x 206	Blue
NF121511.ASBL2	14.9 x 11.9 x 10.9 / 378 x 302 x 277	13.1 x 9.5 x 10.3 / 333 x 241 x 262	Blue
NF241505.ASBL2	23.9 x 14.9 x 5.0 / 607 x 378 x 127	21.5 x 13.1 x 4.4 / 546 x 333 x 112	Blue
NF241507.ASBL2	23.9 x 14.9 x 7.5 / 607 x 378 x 191	21.5 x 13.1 x 6.9 / 546 x 333 x 175	Blue
NF241508.ASBL2	23.9 x 14.9 x 8.7 / 607 x 378 x 221	21.5 x 13.1 x 8.1 / 546 x 333 x 206	Blue
NF241511.ASBL2	23.9 x 14.9 x 10.9 / 607 x 378 x 277	21.5 x 13.1 x 10.3 / 546 x 333 x 262	Blue
NF242208.ASBL2	23.9 x 22.4 x 8.7 / 607 x 569 x 221	21.5 x 20.6 x 7.9 / 546 x 523 x 201	Blue
NF242211.ASBL2	23.9 x 22.4 x 10.9 / 607 x 569 x 277	21.5 x 20.6 x 10.1 / 546 x 523 x 257	Blue
NF242214.ASBL2	23.9 x 14.9 x 14.5 / 607 x 378 x 368	21.5 x 13.1 x 13.9 / 546 x 333 x 353	Blue
NF321507.ASBL2	32.0 x 15.0 x 7.5 / 813 x 381 x 191	29.0 x 13.1 x 6.9 / 737 x 333 x 175	Blue
NF481507.ASBL2	47.9 x 14.9 x 7.5 / 1217 x 378 x 191	45.5 x 13.2 x 6.9 / 1156 x 335 x 175	Blue
NF481511.ASBL2	47.9 x 14.9 x 10.9 / 1217 x 378 x 277	45.5 x 13.2 x 10.3 / 1156 x 335 x 262	Blue
NF121504.XSGY3	14.9 x 11.9 x 4.0 / 378 x 302 x 102	13.1 x 9.5 x 3.5 / 333 x 241 x 127	Charcoal
NF121505.ASGY3	14.9 x 11.9 x 5.0 / 378 x 302 x 127	13.1 x 9.5 x 4.4 / 333 x 241 x 112	Charcoal
NF121507.ASGY3	14.9 x 11.9 x 7.5 / 378 x 302 x 191	13.1 x 9.5 x 6.9 / 333 x 241 x 175	Charcoal
NF121508.ASGY3	14.9 x 11.9 x 8.7 / 378 x 302 x 221	13.1 x 9.5 x 8.1 / 333 x 241 x 206	Charcoal
NF121511.ASGY3	14.9 x 11.9 x 10.9 / 378 x 302 x 277	13.1 x 9.5 x 10.3 / 333 x 241 x 262	Charcoal
NF241505.ASGY3	23.9 x 14.9 x 5.0 / 607 x 378 x 127	21.5 x 13.1 x 4.4 / 546 x 333 x 112	Charcoal
NF241507.ASGY3	23.9 x 14.9 x 7.5 / 607 x 378 x 191	21.5 x 13.1 x 6.9 / 546 x 333 x 175	Charcoal
NF241508.ASGY3	23.9 x 14.9 x 8.7 / 607 x 378 x 221	21.5 x 13.1 x 8.1 / 546 x 333 x 206	Charcoal
NF241511.ASGY3	23.9 x 14.9 x 10.9 / 607 x 378 x 277	21.5 x 13.1 x 10.3 / 546 x 333 x 262	Charcoal
NF241514.ASGY3	23.9 x 14.9 x 14.5 / 607 x 378 x 368	21.5 x 13.1 x 13.9 / 546 x 333 x 353	Charcoal
NF242208.ASGY3	23.9 x 22.4 x 8.7 / 607 x 569 x 221	21.5 x 20.6 x 7.9 / 546 x 523 x 201	Charcoal
NF242211.ASGY3	23.9 x 22.4 x 10.9 / 607 x 569 x 277	21.5 x 20.6 x 10.1 / 546 x 523 x 257	Charcoal
NF242214.ASGY3	23.9 x 14.9 x 14.5 / 607 x 378 x 368	21.5 x 13.1 x 13.9 / 546 x 333 x 353	Charcoal
NF321507.ASGY3	32.0 x 15.0 x 7.5 / 813 x 381 x 191	29.0 x 13.1 x 6.9 / 737 x 333 x 175	Charcoal
NF481507.ASGY3	47.9 x 14.9 x 7.5 / 1217 x 378 x 191	45.5 x 13.2 x 6.9 / 1156 x 335 x 175	Charcoal
NF481511.ASGY3	47.9 x 14.9 x 10.9 / 1217 x 378 x 277	45.5 x 13.2 x 10.3 / 1156 x 335 x 262	Charcoal

NF NEWSTAC® FEATURES

- Lightest weight tote per similar size in the industry
- Available in 17 sizes
- 3 bottom designs to choose from: Smooth, Crosspad®, or Crosstac®
- Patented label pocket to protect KanBan cards
- Improved impact strength
- Rimless versions and smooth sidewall contours for optimal placard application
- 100% compatible with existing box lines
- Drain holes available
- Improved ergonomic features, which allow for safe handling
- Label texture area on some models
- Both detached and attached lid options are available for certain model numbers
- Compatible with 45 x 48 pallet systems, AFP, NFP, SFK, and SMP
- Load capacity is 33 lbs
- Maximum stack load 900 lbs

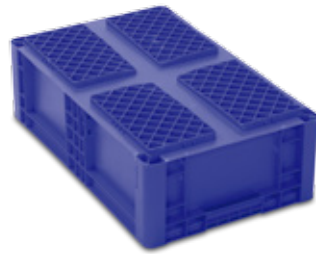
STRAIGHT WALL CONTAINERS



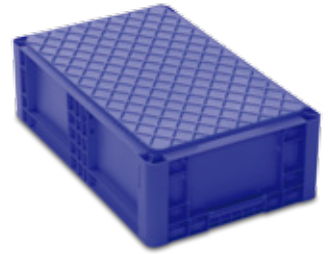
Smooth bottom



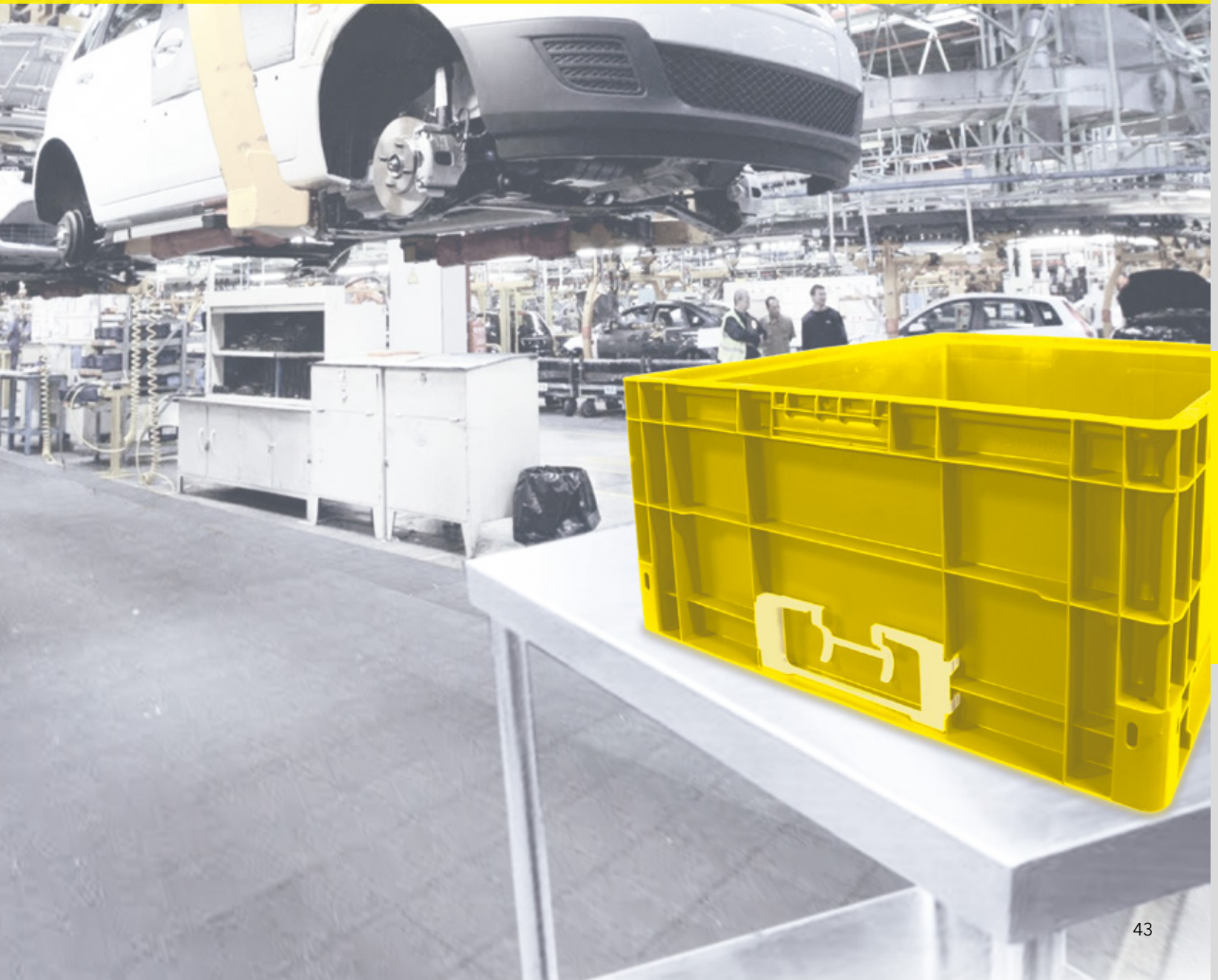
Crosspad®



Crosstac®



Reinforced





STACK AND NEST CONTAINERS FOR WAREHOUSING AND MATERIAL-HANDLING APPLICATIONS

SSI SCHAEFER containers offer nesting ability, convenience, and are efficient in stacking. A 4:1 nest ratio means significant storage space savings and economic payback for shipping returns.

Made by SSI Schaefer using heavy Duty FDA approved polypropylene or polyethylene to virtually last forever, these containers will resist oils and grease and are impervious to most chemicals. Reinforced rim provides extra strength and

stacking capacity. Available in 4 popular colors, blue, red, green and yellow. Lids and labels, for easy part identification, are available. All sizes, colors and accessories in stock for fast and quality service.

EFB Heavy Duty. Our strongest Stack and Nest Container.

Designed for use in food processing, industrial, and distribution applications. The EFB container securely stacks when full and nest when empty to minimize freight and storage costs. Made by SSI SCHAEFER using heavy-duty FDA approved polypropylene or polyethylene for lasting durability. These containers resist oils and grease and are impervious to most chemicals.

Reinforced rim provides extra strength and stacking capacity. Available in four popular colors, blue, red, green and yellow. Utilize lids and labels for easy part identification.




EFB CONTAINER FEATURES

- Three sizes, three heights, one footprint
- Made of polypropylene, FDA approved
- Inventory stock in blue. Available in green, yellow, and red with minimum order quantities
- Oil and grease resistant, and impervious to most chemicals
- Optional lids latch securely into place
- Compatible with Euro-pallet and 48" x 40" pallet models
- All three containers interstack and nest with each other
- Ergonomic handles offer an easy grip from the side or top
- Built-in 3" x 2.25" label holder
- Large, protected hot stamp areas
- Protected bar-code areas
- Easily conveyed on textured bottom
- Easy to clean

EFB Stack & Nest Containers

Product#	Outside dimensions L x W x H (inches/mm)	Inside dimensions L x W x H (inches/mm)	Load Capacity (lbs / Kg)	Colors
EFB642.BL1	23.7 x 15.8 x 7.9 / 602 x 401 x 200	19.8 x 14.3 x 7.7 / 504 x 363 x 196	44 / 20	Blue
EFB643.BL1	23.7 x 15.8 x 11.9 / 602 x 401 x 200	19.8 x 14.3 x 11.7 / 504 x 363 x 296	45 / 20	Blue
EFB644.BL1	23.7 x 15.8 x 15.8 / 602 x 401 x 401	19.8 x 14.3 x 15.6 / 504 x 363 x 396	46 / 20	Blue

Lids	Item	W x L (inches / mm)	Description
	EFBD.BL1	23.7 x 15.8 / 602 x 401	Nest Container Lid Blue



FB All purpose Stack & Nest Containers.

Made from polypropylene, these durable European containers offer dimensions in three footprints. The FB container is ideal for automation and use on conveyors or for assembly. Choose from four standard colors that work great for process protocols.

Nesting feature allows for easy storage and freight savings when shipping empty.

FB CONTAINER FEATURES

- Made of polypropylene, FDA approved
- Reinforced rim provides extra strength and stacking capacity
- Oil and grease resistant, and impervious to most chemicals
- Available in green, blue, yellow and red
- Lids and labels, for easy part identification, are available

FB Stack & Nest Containers

Product#	Outside dimensions L x W x H (inches/mm)	Inside dimensions L x W x H (inches/mm)	Load Capacity (lbs / Kg)	Colors
FB221307.BL1	21.3 x 12.6 x 6.7 / 540 x 320 x 170	16.5 x 10.8 x 6.6 / 420 x 275 x 167	44 / 20	Blue
FB231508.BL1	23.0 x 14.8 x 7.9 / 585 x 375 x 200	19.3 x 13.0 x 7.7 / 490 x 330 x 196	44 / 20	Blue
FB231512.BL1	23.5 x 15.6 x 11.8 / 597 x 397 x 300	22.2 x 14.3 x 11.7 / 565 x 364 x 297	44 / 20	Blue
FB241610.BL1	23.6 x 15.7 x 9.8 / 600 x 400 x 250	21.7 x 14.2 x 9.7 / 550 x 360 x 247	44 / 20	Blue
FB241614.BL1	23.6 x 15.7 x 13.8 / 600 x 400 x 350	19.8 x 13.9 x 13.7 / 502 x 354 x 347	44 / 20	Blue
FB231508.YL1	23.0 x 14.8 x 7.9 / 585 x 375 x 200	19.3 x 13.0 x 7.7 / 490 x 330 x 196	44 / 20	Yellow
FB231512.YL1	23.6 x 15.7 x 9.8 / 600 x 400 x 250	21.7 x 14.2 x 9.7 / 550 x 360 x 247	44 / 20	Yellow
FB231508.GN1	23.0 x 14.8 x 7.9 / 585 x 375 x 200	19.3 x 13.0 x 7.7 / 490 x 330 x 196	44 / 20	Green
FB231512.GN1	23.6 x 15.7 x 9.8 / 600 x 400 x 250	21.7 x 14.2 x 9.7 / 550 x 360 x 247	44 / 20	Green
FB231508.RD1	23.0 x 14.8 x 7.9 / 585 x 375 x 200	19.3 x 13.0 x 7.7 / 490 x 330 x 196	44 / 20	Red
FB231512.RD1	23.6 x 15.7 x 9.8 / 600 x 400 x 250	21.7 x 14.2 x 9.7 / 550 x 360 x 247	44 / 20	Red




KS Light, efficiently nest when empty to minimize freight and storage costs.

SSI SCHAEFER offers a general all-purpose nesting container with optional lid that provides safe storing, easy labeling, as well as an economic return.

KS CONTAINER FEATURES

- Three sizes available
- Made of polypropylene
- Standard blue color
- For KS141007, dividers are available for quartering or halving
- General purpose 180° stack and nest container
- Large label areas on sides



Lids	Item	W x L (inches)	Description
	KSD3021.GN1	30 x 21	KS Nest Container Lid Green

KS Containers

Product#	Outside dimensions L x W x H (inches/mm)	Inside dimensions L x W x H (inches/mm)	Load Capacity (lbs / Kg)	Colors
KS141007.OBL1	14.3 x 10.4 x 7.5 / 363 x 264 x 190	11.4 x 8.3 x 7.4 / 290 x 210 x 187	44 / 20	Blue
KS291710.OBL1	28.3 x 16.5 x 9.8 / 720 x 420 x 250	25.6 x 14.4 x 9.1 / 650 x 365 x 232	44 / 20	Blue
KS302112.0GN1	30.5 x 21.1 x 12.2 / 775 x 535 x 310	28.3 x 18.9 x 12.1 / 720 x 480 x 307	44 / 20	Green





BULK CONTAINERS MAXIMIZE YOUR SHIPPING AND MINIMIZE YOUR RETURN

BulkStac® containers are designed to last and maximize truck space for a better ROI. Lighter than comparable bulk bins on the market, BulkStac continues to offer savings well after your initial purchase. A unique design incorporates periphery runners, which eliminate the center foot so your products are safe from damage inside the container underneath.

Erected heights of 33.8" and 25.6" collapse down to 12.75"—allowing them to stack nine high with 234 containers per truck load. SSI SCHAEFER Bulk Containers are lighter than comparable boxes on the market, reducing shipping weights and therefore costs.

At the same time, loading capacity is increased up to 2,000 lbs thanks to a patented design that prevents splitting of corner feet when loaded, the most common failure mode of comparable boxes on the market. The base achieves its rigidity

with periphery runners only, eliminating the need for a center foot which can deflect downward and damage product in the container below.


The flat deck provides more usable internal cube space. Internal wall design make it easy to clean and ideal for automotive, textile, food industries, and even wholesaler applications. Available with or without doors and SSI SCHAEFER can cut and weld containers to fit your specific needs.

BULK CONTAINER FEATURES

- Containers sized for AIAG 45 x 48 optimal cube utilization
- Available in 9 heights
- Flat deck for more internal usable space
- Dunnage storage options
- 2,000 lb load capacity**
- NFT MultiStac® top cap available

SB Bulk Containers

Product#	L x W x H (inches / mm)	Colors
SB48452502.BLK	45 x 48 x 25 / 1143 x 1219 x 635	Black
SB48453402.BLK	45 x 48 x 34 / 1143 x 1219 x 864	Black
SBH48455002.BLK	45 x 48 x 50 / 1143 x 1219 x 1270	Black

Top Cap	Item	W x L (inches)	Description
	NFT4845.000BK1	45 x 48	Collapsible Bulk Container Top





GLOBALSTAC®, THE COLLAPSIBLE BULK CONTAINER WITH A GLOBAL FOOTPRINT

The new GlobalStac® reusable bulk container is engineered to maximize both land tractor trailers and sea freight containers. Utilizing more space during shipping saves you time and money—ship more product at once with GlobalStac.

The GlobalStac® from SSI SCHAFFER is an innovative way to maximize cube utilization. Companies can now send more product with each truckload or sea container. It's a great way to maximize revenue with each shipment. GlobalStac offers 95% cube utilization in both 40' sea containers and 53' tractor trailers

and was created as a sustainable way to protect components during shipping. GlobalStac provides a great return on investment for companies looking for a sustainable international reusable packaging solution.

Product#	Outside Dimensions L x W x H - in (mm)	Inside Dimensions* L x W x H - in (mm)	Inside Volume* cu ft (Liters)	Deck Height in (mm)	Stack H. - 53' Trailer - in (mm) Erect Collapsed
SG121033	47.04 x 38.98 x 33.23 (1195 x 990 x 844)	43.93 x 36.06 x 27.20 (1116 x 916 x 691)	24.9 (706,1)	5.38 (137)	98.41 (2500) 98.72 (2508)

*Inside dimensions and inside volume to fill line with no dust cover. **As all products can have unique loading patterns and shifting characteristics, SSI SCHAFFER maximum weight limits as shown here, SSI SCHAFFER does not warrant that all loads will perform the same as lab testing.



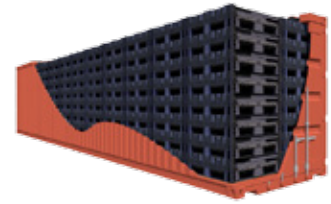
Ship up to 96 upright containers in 53' trailer*.



Ship up to 256 collapsed containers in 53' trailer*.



Ship up to 66 upright containers in 40' sea container*.



Ship up to 176 collapsed containers 40' sea container*.

*Volume based on a 33" height.



“Here at Mitsuba Bardstown, we think the SSI SCHAEFER bulk containers are built better and stronger than others on the market.”

Kent G., Mitsuba



Stack H. - 40' Sea Cont - in (mm)		Solid Walls	Weight - lbs. (kg)		Truck-load QTY. 53'		Truck-load QTY. 40'	
Erect	Collapsed		2 Access Doors	4 Access Doors	Erect	Collapsed	Erect	Collapsed
98.41 (2500)	98.72 (2508)	97.22 (44)	98.11 (45)	N/A	96	256	66	176

recommends that customers perform their own load capacity testing. The SSI SCHAEFER criteria in development is to target and test to the follow

ELECTROSTATIC DISSIPATIVE AND CONDUCTIVE BINS

Guarding against static shock requires the use of an ESD material such as conductive, anti-static, or static dissipative plastics materials and foam dunnage to minimize risk.

The Difference between Dissipative and Conductive

Electricity at rest is static electricity. The transfer of electrons that occurs upon sliding, rubbing, or separating material generates electrostatic voltage. The discharge of this action results in a mild to painful shock. When electronic components are subject to electrostatic discharge, those items are typically damaged—even with low voltage.

Employees are usually the prime causes of electrostatic discharge during assembly or shipping of electronic components. However, even when an approved electrostatic dissipative or a conductive container is used, electronic components are still at risk depending on the materials used during the manufacturing process.



LF Conductive Hopper Stackable Bins

Product#	L x W x H (inches / mm)	Description	Colors
LF140806.0PP3	14.0 x 8.0 x 6.0 / 356 x 203 x 152	LF ESD Hopper Stackable Bin	Black
LF140808.0PP3	14.0 x 8.0 x 8.0 / 356 x 203 x 203	LF ESD Hopper Stackable Bin	Black
LF201208.0PP3	20.0 x 12.0 x 8.0 / 508 x 305 x 203	LF ESD Hopper Stackable Bin	Black

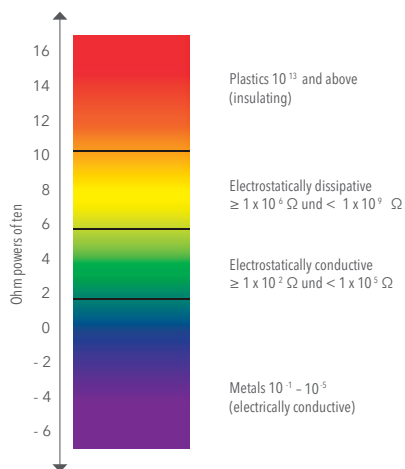
Protect Your Electronics Wisely

With electrostatic dissipative (ESD) products from SSI SCHAEFER, the charge flows to a ground position in a slow and controlled manner. Dissipative materials have a surface resistance equal to 10^6 ohms/square but less than 10^9 ohms/square.

ESD BIN CONTAINER FEATURES

- Static dissipative solution protects product from electrostatic discharge
- Permanent ESD protection with infinite shelf life for the container and its contents
- Available in both AIAG and European standard footprints
- Can be combined with ESD foam or divider sets to further reduce damage caused by mishandling
- Lid options offer further protection from moisture and dust
- Perfect for clean rooms and other controlled environments





Ohms / Sq.	Material	Description
$>10^{13}$	Insulative	Insulators and base polymers. These materials are not protective against static electricity.
10^{10} to 10^{12}	Anti-Static	Initial charges are suppressed, but may only be surface resistant.
10^6 to 10^9	Dissipative	No or low initial charge. Prevents discharge to or from human contact.
10^3 to 10^5	Conductive	No initial charge, but still provides an easy path for bleed off to another object.
1 to 10^3	Shielding Composites	Employs nickel coated carbon fibers to omit EMI only in specific products.
10^{-3} to 1	Carbons	Carbon powder and fiber.
$< 10^{-3}$	Metals	Stainless steel, bronze, and copper.

The risk of electrostatic charges are extremely low, and ESD containers prevent discharge from human contact.

The protection need will determine the material type. For conductive materials, the surface resistance equals to 10^1 ohms/square but less than 10^5 ohms/square. Conductive containers are typically used in applications that do not come into contact with sensitive components.



STEEL CONTAINERS, THE BEST CHOICE WHEN YOU NEED EXTREMELY ROBUST CONTAINERS

The Lager-Fix container was the first container ever designed by SSI SCHAEFER, and after 80 years later it is still one of the bests we have created.

When you need extremely robust containers that are able to withstand high mechanical loads, steel boxes and containers from SSI SCHAEFER offer the best cost-effective and highest quality solution. Whether in production preparation, in a warehouse, in freight forwarding, order picking or in transport, our Steel Boxes and Steel Containers always meet the toughest demands.

They can be exposed to extreme temperature variations and even washed with the products to minimize handling costs; thanks to the galvanized steel plate use, they will not rust or corrode, and will truly last forever. Accessories include covers and front label holders. Steel Containers are available in stock and ready to ship for fast and quality service.



14/7 OPEN FRONT FEATURES

- The steel version of the popular LF Hopper Open Front Container
- Corrosion resistant thanks to the galvanized green painted finish
- Can be exposed to extreme temperature variations and even washed with products
- Ventilated containers also available, minimum quantities applies. Call for details

14/7 Hopper Stackable Steel Bins

Product#	Outside dimensions L x W x H (inches/mm)	Inside dimensions L x W x H (inches/mm)	Load Capacity (lbs / Kg)	Colors
147.060403GV1	6.6 x 4.1 x 3.0 / 167 x 103 x 77	5.4 x 3.5 x 2.9 / 138 x 89 x 74	11 / 5	Galvanized
147.090605GV1	9.1 x 5.9 x 4.8 / 230 x 150 x 122	7.9 x 5.0 x 4.7 / 201 x 128 x 119	22 / 10	Galvanized
147.140808GV1	13.6 x 8.2 x 5.7 / 346 x 209 x 145	12.3 x 7.2 x 5.6 / 313 x 184 x 141	44 / 20	Galvanized
147.201208GV1	20.1 x 12.6 x 5.7 / 510 x 320 x 145	18.5 x 11.1 x 5.6 / 469 x 283 x 141	44 / 20	Galvanized





WAREHOUSE SOLUTIONS

SSI SCHAEFER is a leading provider of material handling products and automatic storage and retrieval systems. We're also a leading technology and warehouse management software company with distribution fulfillment implementations for some of the largest brands and retailers globally. Browse through the entire SSI SCHAEFER product portfolio, and find out why SSI SCHAEFER outfits more warehouses and distribution center than any other manufacturer.



WELCOME

QUICK SHIP PROGRAM

SHELVING & CABINETS

CONTAINERS & BINS

WAREHOUSE SOLUTIONS

MATERIAL HANDLING

For easy storage solutions from mobile racking to vertical lift modules, SSI SCHAEFER offers an array of modular shelving systems, pallet racking, and even solutions for small parts picking. Furthermore, SSI SCHAEFER maximizes existing storage space by building upwards with mezzanines and mezzanine rack systems.

High Density Solutions for Small Part Storage: _____



Vertical Lift Modules

The LOGIMAT® vertical lift module is an automated storage and retrieval system that increases storage space for smaller parts. LOGIMAT offers vertical storage in a secure system that is safe and virtually eliminates picking errors. Users can also decrease travel time for picking. In addition, the modular assembly adapts to almost any environment.

VERTICAL LIFT MODULES FEATURES

- Compact design reduces energy and storage costs
- Provides an easy and ergonomically way to pick small parts
- Provides audit and security for high-value parts picking
- Exclusive rack and pinion gear system that prevents misalignments due to standard belts and chains

AS/RS Miniload System

The AS/RS Miniload System is ideal for maximum use of vertical warehouse space with a small concurrent footprint. By using boxes, trays, or bins as storage aids, there is virtually no limit to the shape or surface of goods that can store or buffer. In addition, SSI SCHAEFER offers a wide range of solutions that connect to the Miniload System—providing both manual and automated warehouse equipment to aid in receiving, packout, or any process.

AS/RS MINILOAD SYSTEM FEATURES

- Outstanding cost-performance ratio
- Improves inventory reliability and optimization
- Adjusts to individual warehouse strategies
- Short turnaround for order processing



TRACKLESS MOBILE SHELVING FEATURES

- Well suited for special or heated flooring
- Lower installation costs
- Easily relocates and is great for temporary storage
- Requires 40% less surface area than static shelving

Trackless Mobile Shelving

SSI SCHAEFER offers trackless mobile shelving, which increases storage space for light- to medium-weight materials without affecting floor surfaces. A series of shelving moves parallel to one another and requires only a single operating aisle for access. The large number of racking aisles provide lower storage costs.

High Density Solutions for Pallets:

WELCOME

QUICK SHIP PROGRAM

SHELVING & CABINETS

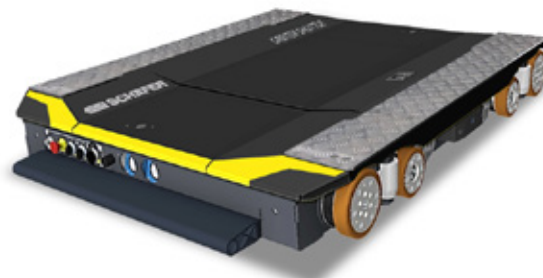
CONTAINERS & BINS

WAREHOUSE SOLUTIONS



The SSI Orbiter®

The SSI Orbiter is a unique pallet shuttle vehicle used to increase efficiency performance and provides safety throughout the entire system. A deep channel storage solution that consists of an automated shuttle vehicle and a docking station. With a redundant safety PLC, the SSI Orbiter is the safest deep channel shuttle vehicle on the market.



SSI ORBITER® FEATURES

- Operates with any existing conventional forklift
- Intelligent charging technology for more efficient, continuous operation
- Highly efficient pallet throughput with a relatively low degree of automation and minimal investment costs
- Problem and maintenance-free operation in cold storage environments.

Mobile Pallet Racking

Mobile Racking is a conventional, selective pallet rack mounted on carriages, which moves on rails embedded into the concrete floor. It offers more pallet location storage than drive-in racking, pallet-flow and VNA racking. In addition, Mobile Pallet Racking from SSI SCHAEFER is used with traditional forklifts or in conjunction with AGV systems.



Conveying Solutions: _____

The Weasel®

Mastering virtually all transport task up to 35 kg while ensuring an optimal material flow, the Weasel is a compact AGV that is both flexible and innovative. Goods reach destinations safely and barrier free utilizing an optical guiding line that installs quick and is easily modified.



WEASEL® FEATURES

- Gentle and safe transport of bins, cartons, and hanging goods
- Barrier-free and low space requirement
- Different designs for optimal ergonomics
- Easy to integrate into existing systems and infrastructures
- Scalable by connecting multiple Weasel AGVs vehicles as a fleet solution
- Simple sequencing of conveyed materials
- Low operation costs

AUTOMATED SYSTEMS

SSI SCHAEFER is a leading supplier of innovative automation systems, integrated warehouse management technology, and storage solutions for various industries. By providing end-to-end omnichannel distribution fulfillment for e-commerce and other markets, SSI SCHAEFER provides the latest technology for picking, storage, and automated guided vehicles.

Storage and retrieval machines

Storage Retrieval Machines (SRM), from SSI SCHAEFER, provide a cost efficient storage option for high-density pallet storage. With optimized storage and rapid material transport with short access times, SSI SCHAEFER offers an innovative storage solution while enabling optimum turnover performance.

All SSI SCHAEFER storage and retrieval machines are manufactured specifically for the customer while implementing standardized components for a faster and more reliable implementation and operations process. The in-house production guarantees consistent quality. SSI SCHAEFER delivers the perfect interaction of all components through its engineering services, machine and steel construction, along with control technology and proprietary IT and software competence—all from a single supplier.

SRM FEATURES

- Experience high reliability from proven components
- Configurable to meet specific application requirements
- Short delivery and implementation schedules
- Practice green logistics with energy savings technology
- More usable storage volume due to an extremely compact design



Storage and retrieval machine Exyz

Designed as a modular system, the Exyz storage retrieval machine accommodates individual requirements from 8 to 45 meters height (26 to 148 feet). With innovative design features, the Exyz offers a multitude of efficiency advantages, high flexibility, and more storage capacity. The name "Exyz" is actually the acronym for which the name represents: "E" for efficiency in energy consumption and performance and "X, Y, and Z" for all three dimensional axes—travel, hoist, as well as storage and retrieval movements. The compact construction leads to an especially high customer use and has an attractive price, shorter delivery and implementation time. Onboard counter-weights for forklifts can be mounted inside the mast, which balances up to two thirds of dead weight of the forklift and increases capacity while the necessary energy input decreases.

Compared to conventional devices, customers achieve an energy savings up to 25 percent during the lift operation and an overall significant reduction in operating costs. Furthermore, the energy efficiency is no longer an equipment option since the energy recovery feature comes standard.

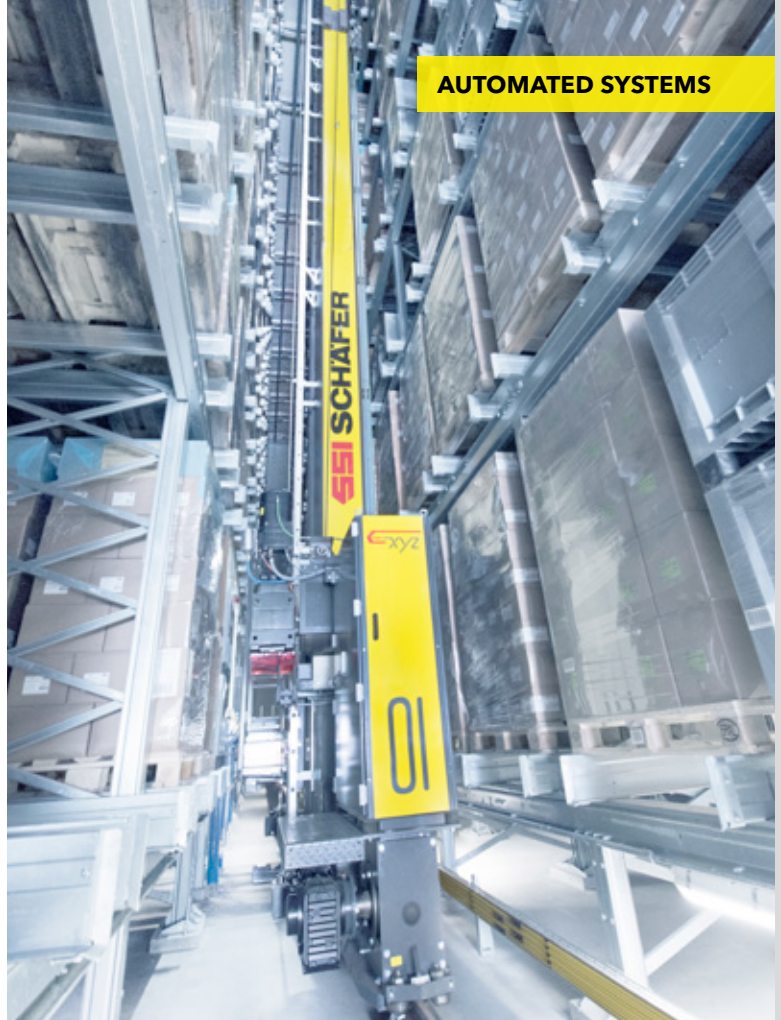
Schäfer Lift&Run

The Schäfer Lift&Run system (SLR) from SSI SCHAEFER is an economical solution for highly dynamic pallet handling in channel storage systems.

The SLR storage device is typically utilized for storing and retrieving pallets up to a storage height of 9 meters (29.5" feet) and serves two to four rack levels per aisle. It is equipped with a shuttle car with lifting unit for autonomous load handling via the SSI Orbiter LHD. In contrast to conventional storage-retrieval machines, the SLR runs on two rails and does not require an upper guide rail. Using multiple devices, one above the other, easily enables the creation of high bay warehouses with a height of up to 45 meters (148 feet) where the pallets are supplied and removed via lifts. The SSI SCHAEFER twin-boom SLR transfers pallets laterally onto its pallet truck. Then, the Orbiter is responsible for storing and removing the pallets from the rack channel. Together, Schäfer Lift&Run and the vertical lifts create the Schäfer Lift&Run system, which significantly enhances throughput.

The Schäfer Lift&Run system from SSI SCHAEFER is consistently based around the logistics matrix concept for pallet handling. SSI SCHAEFER offers a highly dynamic solution with low space requirement and efficient energy usage as an attractive alternative to conventional storage-retrieval machines.

AUTOMATED SYSTEMS



WELCOME

QUICK SHIP PROGRAM

SHELVING & CABINETS

CONTAINERS & BINS

WAREHOUSE SOLUTIONS

Shuttle Systems

Shuttle systems, from SSI SCHAEFER, are fully automated storage and retrieval machines for containers, cartons, and trays. Each system is manufactured to meet customer requirements utilizing standard components. In-house production guarantees quality and perfect interaction with other SSI SCHAEFER products. Shuttle systems provide flexible and high density storage with rapid access. SSI SCHAEFER shuttle systems adapt to single-, double-, and multiple-deep storage for various dimensions and even in an array of harsh environments.

Navette Multi-Level Shuttle

The flexible multi-level Navette shuttle system is the solution for efficient storage and sequenced picking of trays, containers, and cartons in fully automated warehouses.

The Navette shuttle vehicle moves to the appropriate level via the automated miniload system (AMS) via driving and supporting rails. The two vertically arranged double-deep load handling devices enable the Navette to transport on two storage levels with four transport units simultaneously. Thus, the Navette is able to save time by minimizing travel and doubles process efficiency.

The integrated lift drive allows access up to eight storage levels per driving level. The Navette lifts serve as the link between conveying systems and individual Navette driving levels. Arrange multiple shuttles one above the other to enable a flexible warehouse, which can reach a maximum height of 24 meters (82 feet).

NAVETTE FEATURES

- Twice the process efficiency through dual-action processes
- Integrated sequencing through decoupled transfer between Navette vehicles and lifts
- Tailored warehouse configuration due to the scalable quantity and layout of Navette vehicles, driving levels and lifts up to a maximum height of 24 m (82 feet)
- Flexible and optimized connection to workstations using the 3D-MATRIX Solution®
- Internationally proven storage system with maximum availability
- Energy efficiency due to multi-level shuttle technology

SHUTTLE SYSTEMS FEATURES

- Highly flexible and sustainable
- Modular solutions that expand and grow
- Optimum storage density and rapid access
- Maintenance-friendly due to high-quality, proven machine elements
- Problem free transport and rapid installation
- Connection to ERP systems or integration to WAMAS® technology
- Complete turnkey automated system solution

The Navette multi-level shuttle system enables you to access a vast range of articles in storage aisles by using an adjustable-width load handling device. The solution stores and retrieves load carriers with maximum dimensions up to 850 x 650 x 560 millimeters (33.5" x 25.6" x 22") and with a maximum weight of 50 kilograms (110 Lbs.). At the same time, the modular Navette system is perfectly tailored to exact order volumes and specific throughputs.

The decoupled system components are flexible and configurable for expansion growth or replaceable for maintenance needs. Unrestricted access while the system operates provides an easy maintenance schedule. The proven Navette system is distinguished by maximum availability and higher process efficiency, which makes it a perfect solution for e-commerce applications.





Cuby® Single-Level Shuttle

The Cuby® consists of a rack, at least one lift, one shuttle per storage level, a shuttle crane at the back, maintenance platforms (lift platform and control cabinet platform at the front and access platform at the back), and the control and warehouse management software.

In developing the Cuby, SSI SCHAEFER optimized the functional distribution between rack and shuttle so that fewer sensors and actuators on the shuttle and load handling device were necessary. Less parts make the Cuby more reliable and cost-efficient than other one-level shuttle systems on the market.

CUBY FEATURES

- Excellent space utilization with double-deep storage in connection with a single-deep aisle and minimized vertical distance between two rack levels
- System designed for high availability
- An optimized connection to the pre-zone by the double-story lift provides a space-saving design with high performance
- Combinations of cartons and bins are possible
- Aisle width provides ample room for sprinklers
- Maintenance levels with safety shut-of
- Optimized space utilization by customized height adjustment
- Double load handling devices
- High performance with two transfer locations per lift and shuttle
- Two bi-directional lifts per aisle possible
- Pneumatic-free solution
- Smart, sophisticated maintenance access to shuttles
- Fire protection shelving

SSI Flexi Shuttle

The scalable single-level shuttle designed for use in a highly dynamic automated miniload system with the ability to adapt for storage location sizes enables storage of a wide variety of transport units of up to 50 kg (110 Lbs).

The SSI Flexi Shuttle is an innovative solution for optimized storage of cartons, trays, and cubic and conical bins. The modular concept, which combines shuttles, lifts, and a racking system, allows for a tailored and highly flexible system concepts with excellent use of space and high levels of technical performance.

Thanks to the universal load handling device with adjustable width, the Flexi Shuttle can adapt to single-, double-, and multiple-deep storage of a broad spectrum of loading units and dimensions, even in frigid storage conditions.

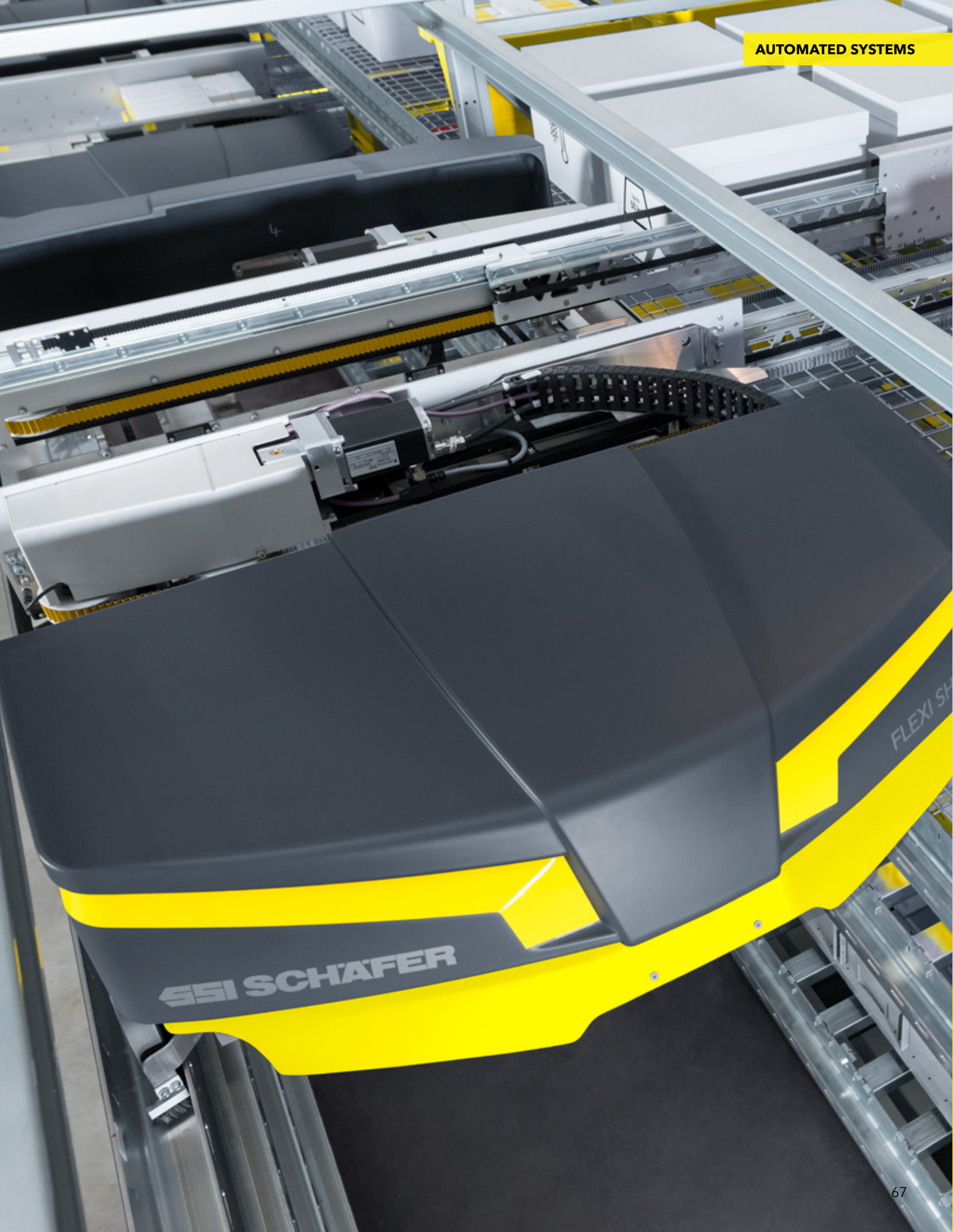
The rack design has dynamic adjustable storage location sizes. And by omitting permanently allocated x-storage positions, this design facilitates an optimized shelf occupancy with maximum storage density. This is achieved with a high diversity of loading units and a broad spectrum of transport dimensions.

Considerable increases in performance are achieved in conjunction with the patented 3D-MATRIX Solution®. As well as having high-performance lifts installed at the end of the aisles, this solution allows any number of integrated lifts to be installed in any position throughout the storage aisles. Therefore, the SSI Flexi Shuttle makes it possible to combine a highly dynamic solution for automated storage, buffering, and integrated sequencing in just one system.

FLEXI SHUTTLE FEATURES

- Tailored and expandable system concepts with excellent use of space and performance
- Secure handling of a wide variety of loading units, which have a capacity up to 50 kg (110 Lbs)
- Dynamically adjustable storage location sizes allow for a flexible and maximum storage density throughout the system life cycle
- Suitable for use in deep-freeze environments
- Option to integrate with 3D-MATRIX Solution®
- An innovative energy supply utilizes super-capacitors to ensure power efficiency
- Secure and high-performance communication using Siemens Industrial Wireless LAN (IWLAN)







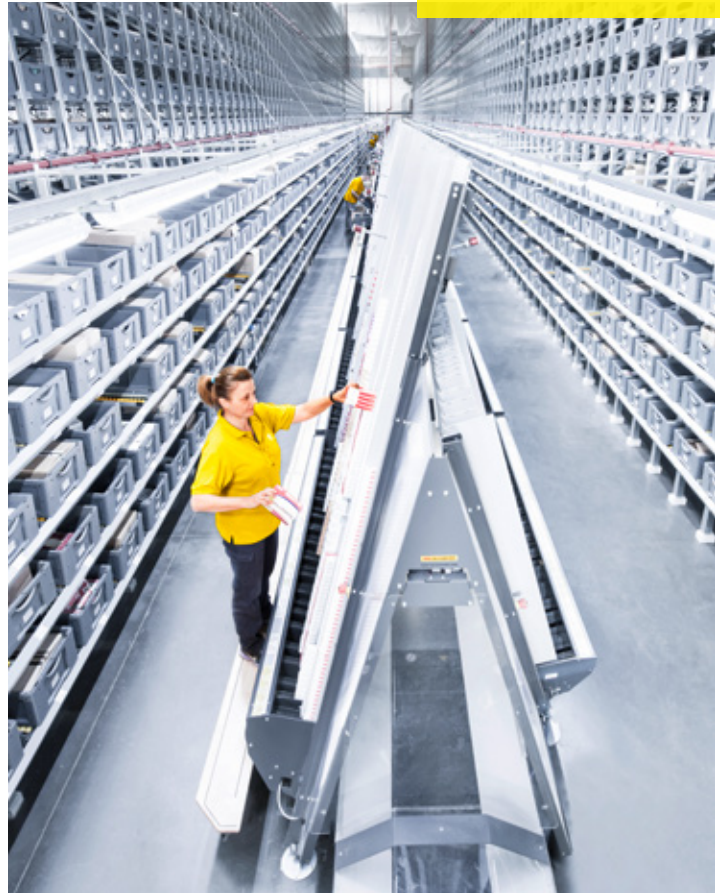
Carousel System

For a high speed and dynamic picking range, the Schaefer Carousel System (SCS) offers an innovative and cost-effective system. With 1,000 picks per hour, high storage compression, and a modular design, the SCS is a solution that provides the basis for your picking operation with a high performance rate while allowing for future growth.

CAROUSEL SYSTEM FEATURES

- Short implementation time
- High order picking quality based on the unique user guidance system
- A flexible system that scales with future growth
- Requires less space and reduces labor
- Flexible storage options for an array of goods





Picking Solutions

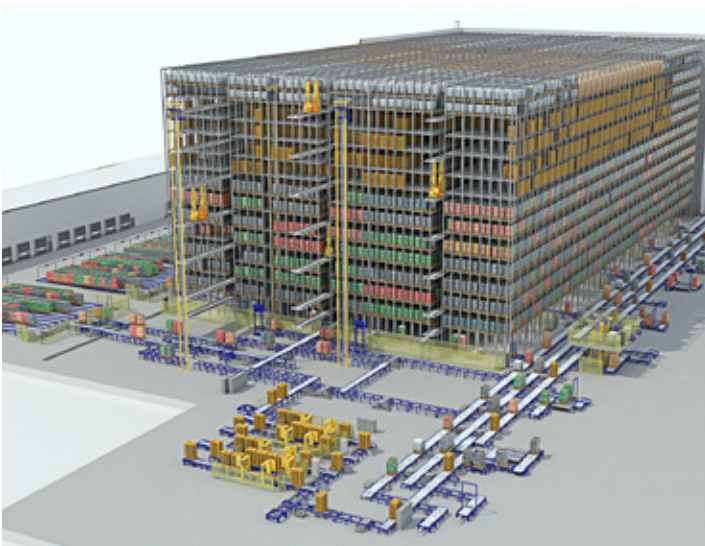
Picking systems for an efficient logistics chain and rapid order process are at the heart of SSI SCHAEFER automation systems. Picking goods is a costly and labor-intensive process and SSI SCHAEFER has multiple solutions to help reduce both manual labor and operation costs.

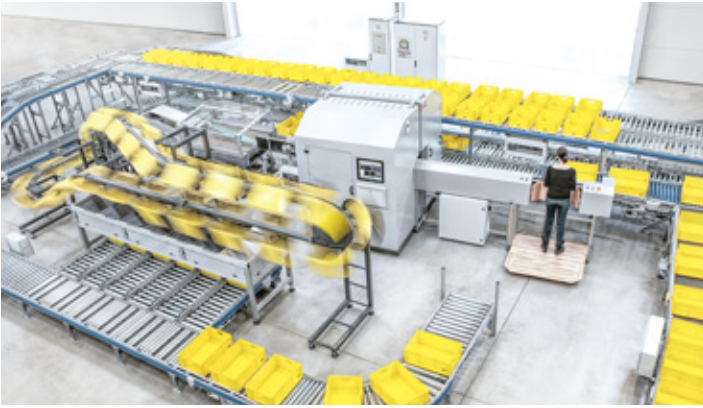
Automated Picking

Automated picking systems from SSI SCHAEFER compile complex orders automatically, reliably, and within the shortest time possible. Extremely rapid order processing even during peak times with optimum material flow provides a faster turnaround for customers. Plus, automated picking systems from SSI SCHAEFER harmonize perfectly with conveying systems.

AUTOMATED PICKING FEATURES

- High productivity even at peak volume
- Efficient due to elimination of time-consuming manual picking activities
- Consistently high quality and reliability—even under maximum loads
- Maximum space usage due to high product density
- Easy maintenance as a result of flexible product channels
- Easy integration into existing systems
- Modular systems, which are ideal for expansion





Semi-Automated Picking

Humans remain essential when it comes to semi-automated picking operations. With SSI SCHAEFER, ergonomics@work![®] plays a major role making moving tasks less strenuous and more natural while increasing productivity. Semi-automated systems from SSI SCHAEFER are easily integrated into existing picking procedures and strategies. These systems are typically used in conjunction with dynamic flow or shelf and pallet racks. Units are installed quickly and are easy to maintain. In addition, semi-automated systems perfectly harmonize with other SSI SCHAEFER components and technology.

SEMI-AUTOMATED PICKING FEATURES

- Based on goods-to-person principle
- Virtually error-free picking
- Optimum material flow
- Gentle handling of products
- Easy to integrate into existing material flow and picking operations
- Scales with future growth
- Rapid installation
- Ergonomic workstations



Manual Paperless Picking

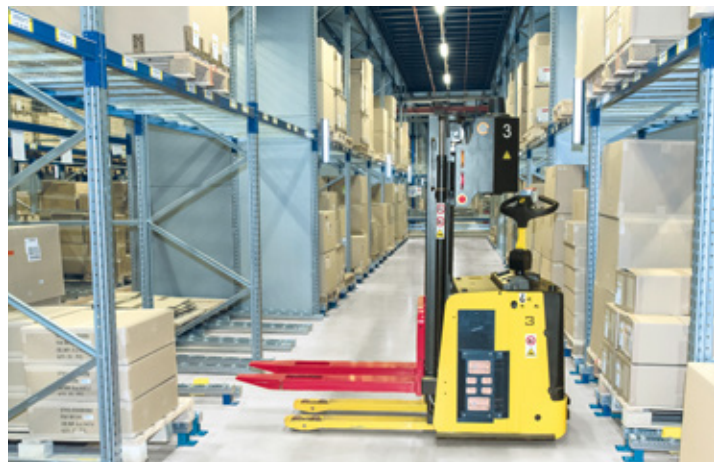
Maintaining a simplistic picking operation requires systems that embrace ergonomic human picking movement and easy interactivity. Picking is central to warehouse logistics. At SSI SCHAEFER, manual paperless picking solutions are based on person-to-goods principle, where people access goods stored within a fixed location. These highly interactive systems embrace the human element and work by voice, light, and radio frequency. Each system is designed to enable easy human interactions while allowing for decision making abilities by the user.

MANUAL PAPERLESS PICKING FEATURES

- Quality picking interactions
- Optimum material flow
- Minimized error frequency
- Gentle handling of products
- Fast and easy integration
- Scalability
- Easy maintenance
- High throughput vs. regular manual systems
- Ergonomic workstations

Automated Guided Vehicles (AGVs)

Automated Guided Vehicles have become an integral part of warehouse operations. The AGV fleet from SSI SCHAEFER features a diverse range of solutions for both large and small load carriers that are capable of creating a logistics network, encompassing various warehouse and operation processes.



AUTOMATED SYSTEMS

WELCOME

QUICK SHIP PROGRAM

SHELVING & CABINETS

CONTAINERS & BINS

WAREHOUSE SOLUTIONS

AGVs FEATURES

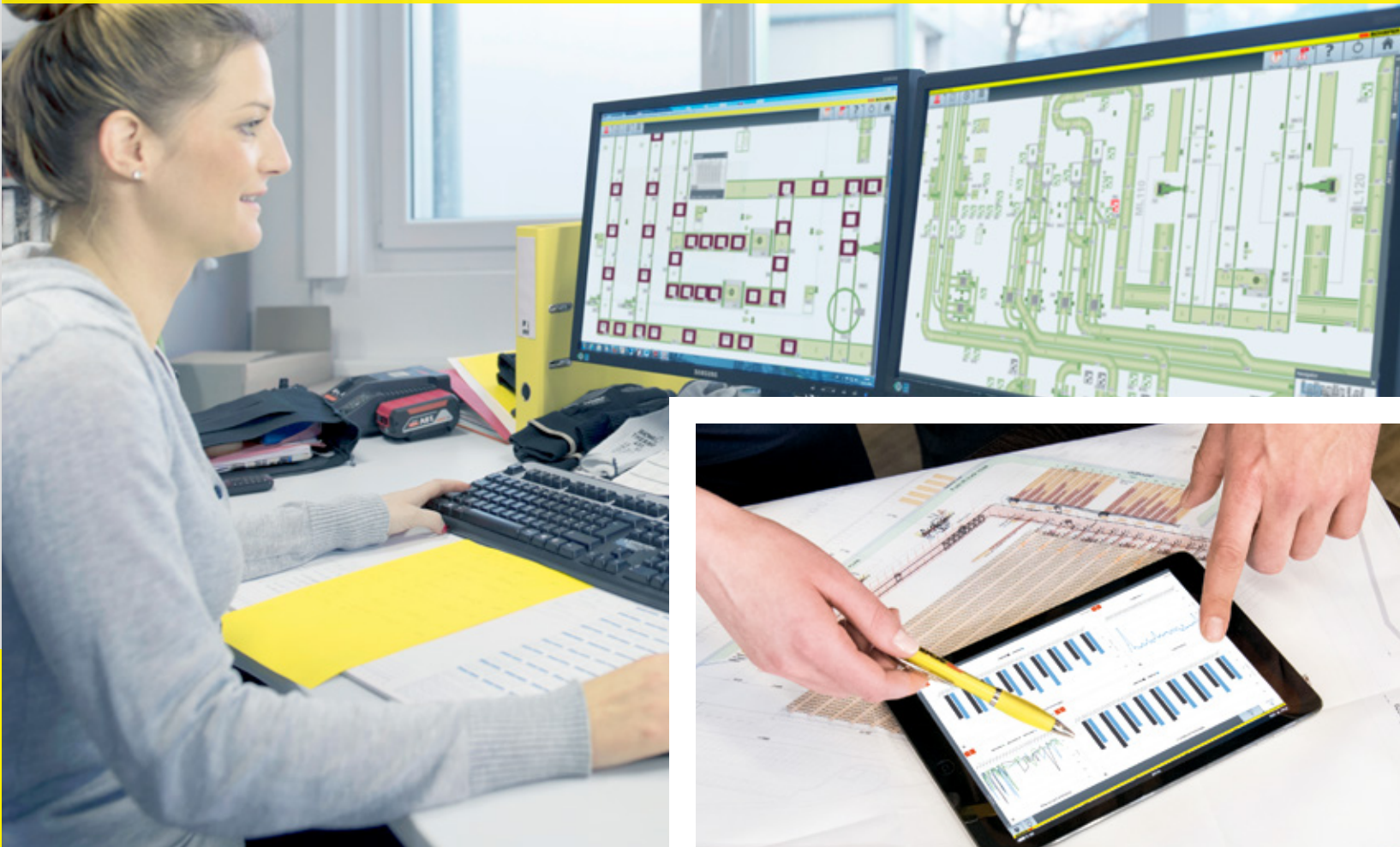
- Sustainable reduction of cycle times
- Flexible automation of intra-company material flows
- Minimal infrastructure required
- Reduction of subsequent costs
- Optimum adaptation to dynamic logistics market requirements
- Unique configuration of individual AGV fleet
- Safe transport of goods and load carriers
- Easy integration and low requirements for IT infrastructure
- Rapid charging
- Dependable even in harsh environments like deep-freeze or hazardous areas

WAREHOUSE TECHNOLOGY

Warehouse Management Software

WAMAS®, by SSI SCHAEFER, provides a comprehensive warehouse management software solution for both manual- and fully-automatic warehouses. WAMAS offers additional solutions for warehouse execution systems, warehouse control systems,

and labor management systems. WAMAS Lighthouse also provides a complete easy-to-read real-time visual dashboard for all warehouse systems.

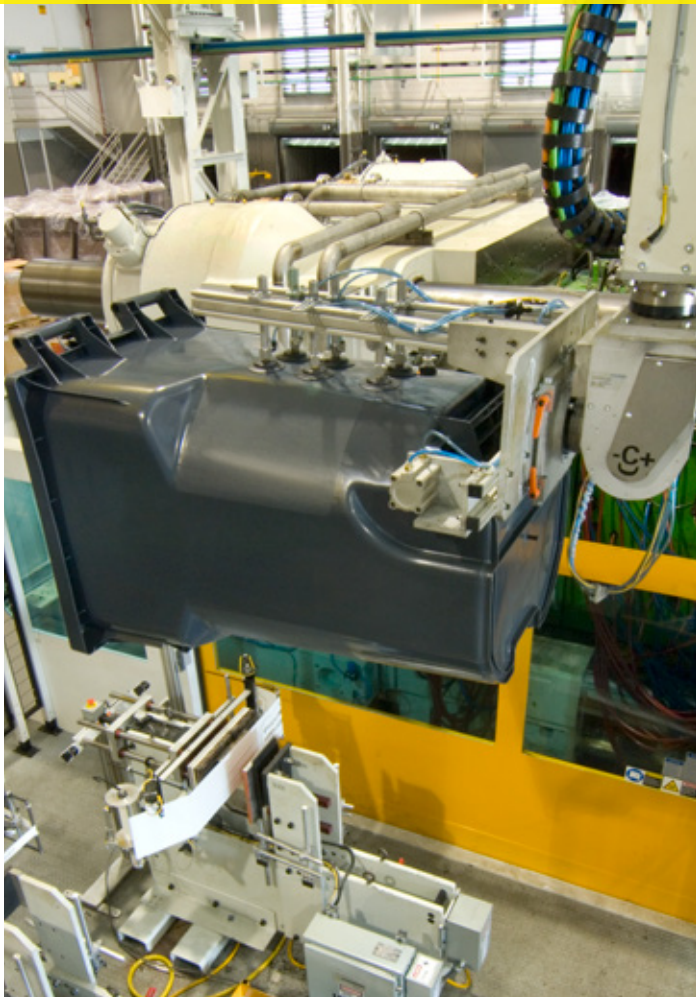


ENVIRONMENTAL SOLUTIONS

Waste Technology

SSI SCHAEFER is synonymous with quality waste and recycling carts. With manufacturing facilities worldwide, SSI SCHAEFER has an outstanding reputation within the industry as the quality leader of injection-molded carts and on-time delivery.

Refuse, hazmat, medical, document security, and recycling carts are available in single and bulk quantities.



REASONS WHY YOU SHOULD CHOOSE SSI SCHAEFER:

- **Stability:**

As a financially independent family business, SSI SCHAEFER is committed to long-term solutions. You can trust that our team of experts will be there for you tomorrow and in years to come.

- **Efficiency:**

SSI SCHAEFER solutions are scalable and can grow as business increases. Upgrades and retrofits are always available to meet customer demands.

- **Quality:**

As a specialist in automation, SSI SCHAEFER provides a single-source solution. As an original equipment manufacturer, SSI SCHAEFER guarantees quality and the right solution for your needs.

- **Reliability:**

Thanks to our worldwide customer service and support network, SSI SCHAEFER ensures a smooth operation of your system.

- **Know-how:**

SSI SCHAEFER solutions are always up-to-date with the latest technological standards and are easily integrated into an existing IT landscape.

- **Global Network:**

As an international company, SSI SCHAEFER has local offices worldwide. With over 70 locations, our team of experts speak your language.

For SSI SCHAEFER products, contact your local distributor.

[ssi-schaefer.com](https://www.ssi-schaefer.com)

©2019 SSI SCHAEFER. Release_2.0_06/19-EN
No liability for misprints.

SSI SCHAEFER